

CCX-17 / -19

1U Rackmount Keyboards

RUGGED MILITARY GRADE



SYSTEMS ENGINEERED TO PERFORM®

The CCX-17 and -19 are military grade high performance 1U clamshell LCD keyboard drawers offering 17" and 19" displays. The CCX family is designed to meet Mil-Std 901D and 810F and includes a solid milled aluminum front panel, lightweight 5052-H32 aluminum construction and locking stainless hardware throughout. The drawer is held closed by two captive thumb screws. Lock out friction slides are included. Friction slides assure the drawer does not randomly slide in and out in the back of a moving vehicle. The CCX is ideal for mounting in a transit case for adverse environments that would destroy lesser displays.

The displays are high quality long life AUO TFT LCDs with a maximum resolution of 1280x1024. A bonded anti-reflective (AR) filter with an EMI coating "pops" the displayed image for unparalleled clarity. Included is a high quality 113 key Nema 4 / IP65 rated keyboard with integrated pointing device and wrist pad. Video inputs of analog VGA, DVI-D, DVI-I, NTSC/PAL/SECAM, Composite, SVideo and Component (YCbCr) are available on selected models.

A 4- or 8-port KVM switch is available with front panel button selection and active port LED indication.

As with all Chassis Plans products, a wide variety of custom options are available including paint color, customer logo, and display options.

ENCLOSURE

- 1U (1.75") x 24" deep
- Rugged 5052-H32 aluminum construction with milled solid aluminum front panel
- Designed to meet MIL-STD 901D and 810F for extreme environmental conditions
- Compact enclosure for limited depth installation
- Rugged thumbscrews to lock in rack
- Includes rugged friction slides and cable management arm

DISPLAY

- 17" or 19" Active Matrix SXGA TFT LCD
- 1280 x 1024 Native Resolution
- Bonded anti-reflective contrast enhancement glass overlay with ITO EMI coating

VIDEO CONTROLLER

- Options for VGA, DVI-D, DVI-I, NTSC/PAL/SECAM, Composite, S-Video and Component (YCbCr)
- OSD (On Screen Display) for Monitor Setup and Control

KEYBOARD

- 133-Key low profile NEMA 4 / IP65 sealed
- Built-in sealed pointing device
- Spill Proof (Spilled Coffee / Coke Proof)

KVM

- Several options 4 & 8 port, VGA & DVI video inputs, PS2 or USB keyboard interface

OPTIONAL FEATURES / OPTIONS

- Enhanced Backlighting
- Protective Glare Filters
- Customer Specified Paint Color
- Customer Logo
- Keyboard options



Systems Engineered to Perform®

Chassis Plans · 8295 Aero Place · San Diego · CA · 92123
Phone (858) 571-4330 · Fax (858) 571-6146
saleseng@chassisplans.com
www.chassis-plans.com
© 2009 Chassis Plans

ENCLOSURE

1U x 19" (wide) x 24.4" (deep) (w/ cable arm)
 High strength 5052-H32 aluminum construction
 Solid milled front panel
 Fits 24"-36" Rack
 Weight: 35lbs (w/o KVM)
 38lbs (w/ KVM)
 Color: Powder coated black, light texture
 (Custom colors and logos available)

DISPLAY ENHANCEMENTS

Size	17"	19"
Resolution	1280x1024	1280x1024
Contrast Ratio	1300:1	1300:1
Brightness	380 cd/m ²	300 cd/m ²
Pixel Pitch	.264x.294mm	.264x.294mm
Viewing Angle	89° L/R/U/D	80° L/R/U/D
Response Time	8mS GTG	12mS GTG
Operating Temp	0-50 Deg C	0-50 Deg C

1.1mm soda lime glass with ITO conductive EMI coating (<13.5 ohms/sq in) bonded to LCD
 1.1mm soda lime glass w/ anti-reflective coating bonded to ITO EMI filter
 3mm thick bonded copper bus bar around entire periphery of the display

KEYBOARD

Sealed silicone rubber keyboard
 113 Keys
 20 Function keys
 Integrated numeric pad
 High quality carbon-on-gold contacts
 Protection to NEMA 4 / IP65 dust & splash proof (spilled Coke & coffee proof!)
 PS/2 or USB Connection
 Tactile Keystroke
 10,000,000 lifecycles per switch

Pointing Device

Incorporated pointing device for precise tracking
 3 Mouse buttons
 Built in to silicone rubber keyboard
 Hall sensor motion detection
 USB or PS/2 interface



Power Supply Options

AC Input

100 to 260VAC, auto selecting
 47-66Hz

12VDC Input Transient Filter

Line transient protection for 12VDC vehicular applications

Mil-Std-1275A / 704 DC/DC Converter

True 1275/704 compliance for military 28VDC nominal vehicle inputs
 12 to 26VDC input

48VDC DC/DC Converter

36 to 75VDC Input
 Isolated Inputs for +/- input levels

See the appropriate power supply section in the manual for complete power supply specifications.

KVM Options

KVMX

Ports: 4
 Inputs: DVI-D, USB, Speaker, Microphone
 Console: DVI-D, 2x USB, Speaker, Microphone
 Provides 2 additional USB ports



KVMX-4VGA

Ports: 4
 Inputs: aRGB VGA, 2x PS/2
 Console: aRGB VGA, 2x PS/2, 2x USB
 Daisy Chain capable

KVMX-8VGA

Ports: 8
 Inputs: aRGB VGA, 2x PS/2
 Console: aRGB VGA, 2x PS/2, 2x USB
 Daisy Chain capable



The KVMX-4VGA and -8VGA are identical with the exception of the number of ports.

LCD CONTROLLERS

The three controllers are highly integrated with multiple inputs and capabilities. These are Harsh Environment versions with wide range operating temperatures of -40 to $+80$ Deg C, shock and vibration tolerance and conformal coating for extreme environmental applications.

The chipsets are provided by Genesis for state of the art performance. These are road mapped controllers offering long term availability for revision controlled multi-year programs.

VGA / DVI-I HE-1400

Inputs:

Analog RGB: 60Hz at SXGA, WXGA, XGA, SVGA, VGA

With auto detect of Digital Separate Sync, Sync-On-Green & Composite Sync. Auto detects VGA ~ SXGA interlaced & non-interlaced.

DVI-D: 60Hz at SXGA, WXGA, XGA, SVGA, VGA

Image Scaling: Up / down scaling to fit input to panel resolution.

Image Control: Brightness, Contrast, Saturation, Hue, Frequency, Phase, Color Temperature, Image position, Hue, Gamma.

Other Features: Auto picture setup, Auto RGB calibration, Auto source seek, OSD timeout, OSD position, Input source select, OSD menu lock, Direct key for brightness level adjustment.



Systems Engineered to Perform®

Multi-Input VGA/DVI-D/Video HE-1600

Inputs:

Analog RGB: 60Hz @ UXGA
75Hz @ SXGA, WXGA, SVGA, VGA
1152 x 900 @ 66Hz (SUN)
1152 x 900 @ 76Hz (SUN)
1280 x 1024 @ 76Hz (SUN)

With auto detect of Digital Separate Sync, Sync-On-Green & Composite Sync. Auto detects VGA ~ USXGA interlaced & noninterlaced.

DVI-I: 60Hz @ UXGA
75Hz @ SXGA, WXGA, XGA, SVGA, VGA

Video: NTSC / PAL / SECAM (Interlaced)
Composite Video, S-Video
Component (YCbCr) (Optional)

Image Scaling: Up / down scaling to fit input to panel resolution.

Image Control: Brightness, Contrast, Saturation, Hue, Frequency, Phase, Color Temperature, Image position, Hue, Gamma.

Other Features: Auto Picture Setup, Auto Color Gain, Auto Power, OSD Timeout Position and Transparency, Hot Keys, Auto Source Seek.

Multi-Input VGA/DVI-I/Video w/ PIP HE-1920

Inputs:

Analog RGB: 60Hz at UXGA
75Hz at SXGA, WXGA, XGA, SVGA, VGA

With auto detect of Digital Separate Sync, Sync-On-Green & Composite Sync. Auto detects VGA ~ UXGA interlaced & noninterlaced.

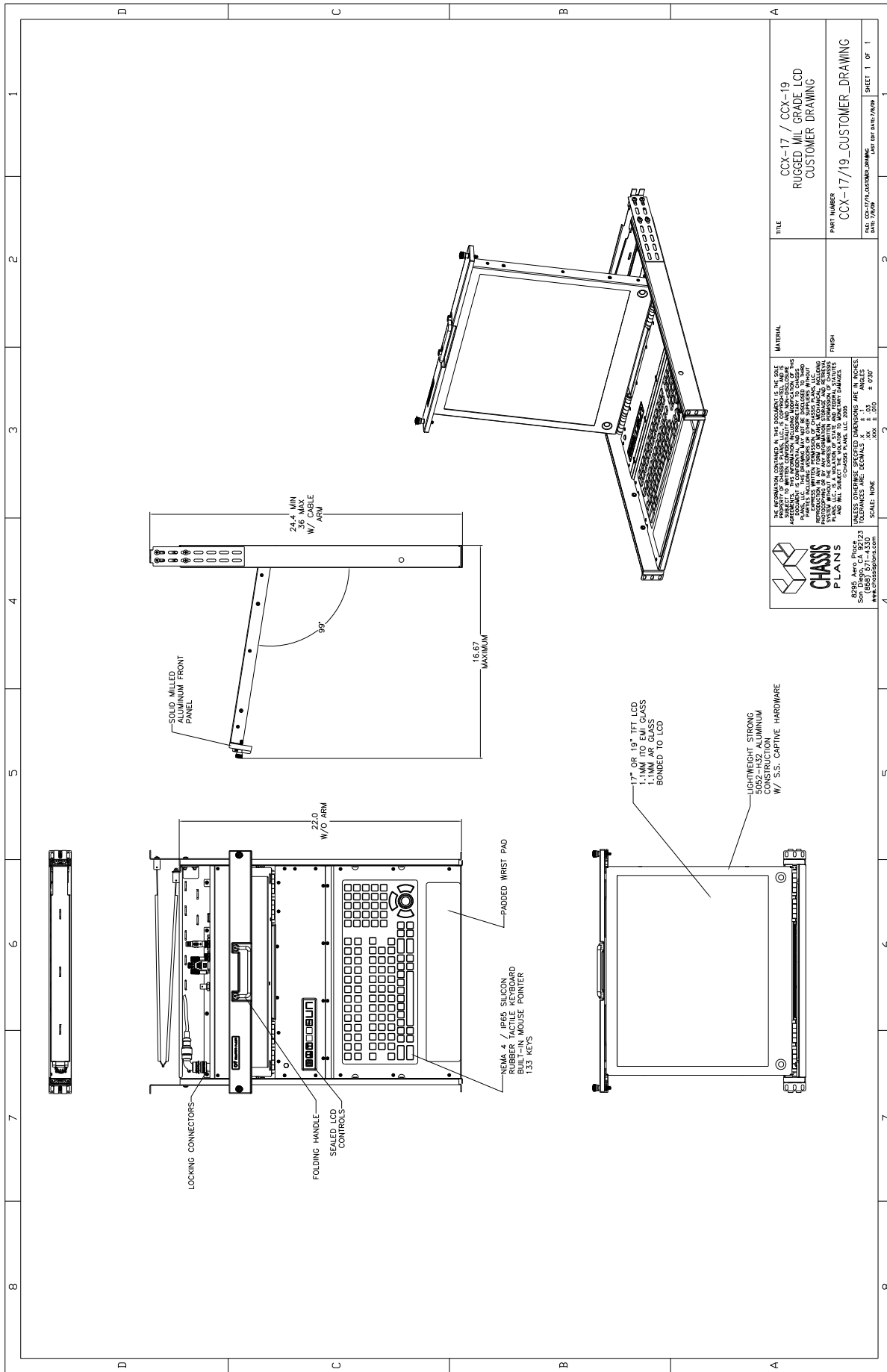
DVI-D: 60Hz at WUXGA, UXGA
75Hz at SXGA, WXGA, XGA, SVGA, VGA

Video: NTSC / PAL / SECAM (Interlaced)
Composite Video, S-Video, RGB Video, SD Component (YCbCr) (Optional)

Image Scaling: Up scaling to fit input to panel resolution.

Image Control: Auto configuration, Brightness, Contrast, Clock, Phase, Color Temperature, Image position, Saturation, Hue, Gamma.

Other Features: System Information, OSD position, Scaling to fill screen and fill to aspect ratio, OSD timeout, Factory reset, OSD menu transparency, Horizontal & Vertical image inversion, Picture in Picture.



<p>THE INFORMATION CONTAINED IN THIS DOCUMENT IS THE SOLE PROPERTY OF CHASSIS PLANS. IT IS TO BE USED ONLY FOR THE PROJECT AND FOR THE PARTS LISTED HEREIN. ANY REPRODUCTION OR TRANSMISSION OF THIS INFORMATION IN ANY FORM OR BY ANY MEANS, WITHOUT THE WRITTEN PERMISSION OF CHASSIS PLANS, IS STRICTLY PROHIBITED. CHASSIS PLANS SHALL NOT BE HELD RESPONSIBLE FOR ANY DAMAGE TO PERSONS OR PROPERTY ARISING FROM THE USE OF THIS INFORMATION. CHASSIS PLANS, LLC DOES NOT WARRANT THE ACCURACY OF THIS INFORMATION. CHASSIS PLANS, LLC SHALL BE THE SOLE AGENT FOR ALL SALES OF THIS PRODUCT TO MILITARY, MARINE, AND NAVAL CONTRACTORS.</p> <p>CHASSIS PLANS, LLC 2008 42255 ASTOR DRIVE, SUITE 100 SAN DIEGO, CA 92123 TEL: 619.444.8888 FAX: 619.444.8889 WWW.CHASSISPLANS.COM</p>	TITLE	CCX-17 / CCX-19 RUGGED MIL GRADE LCD CUSTOMER DRAWING
	MATERIAL	TPMS
<p>SCALE: NONE</p> <p>UNLESS OTHERWISE SPECIFIED, DIMENSIONS ARE IN INCHES. TOLERANCES ARE DECIMALS X 1-1 ANCHES. FRACTIONS X 1-1 ANCHES. ± .020"</p>	PART NUMBER	CCX-17/19_CUSTOMER_DRAWING
<p>8236 Avco Place San Diego, CA 92123 TEL: 619.444.8888 FAX: 619.444.8889 WWW.CHASSISPLANS.COM</p>	DATE: 5/19/17	DATE: 5/19/17
		SHEET 1 OF 1