

CKC Family

Rackmount Keyboard

RUGGED ENTERPRISE CLASS

SYSTEMS ENGINEERED TO PERFORM[®]



The **CKC** family are high performance 1U keyboard drawers. Included is a high quality low profile Cherry Ultraslim 5000 Series 88 key keyboard with integrated track ball or touch pad. The front of the drawer provides a comfortable padded palm rest. The drawer includes friction slides for mounting into a 19" rack. The use of rugged friction slides means the drawer stays where you put it for typing—not rolling in and out. Also included is a cable management arm.

The drawer includes screw locks to secure it into the rack for transportation. It's compact size and light weight rugged aluminum construction make it ideal for use in mobile applications such as transit case installations. The use of friction slides versus ball bearing slides allows it to be used in vehicular and mobile missions such as in the back of a moving Humvee.

Models are available with track ball or touch pad with either PS/2 or USB output connections.



The Original Industrial Computer Source[®]

Chassis Plans · 8295 Aero Place · San Diego · CA · 92123
Phone (858) 571-4330 · Fax (858) 571-6146
salesteam@chassisplans.com
www.chassisplans.com
© 2008 Chassis Plans

Dimensions

19" (wide) x 1.72" (high) x 16" (deep)
 Fits racks 16 to 26.4-inches deep with included adjustable slide brackets
 Optional brackets for deeper racks
 Min keyboard extension: 9.7-inches (to clear rear of keyboard)
 Full keyboard extension: 15.5-inches (to lock engagement)
 Weight: 10.4 lbs (w/ 3 to 11-inch extensions installed)

Keyboard

Cherry G84-5400 (track ball) or G84-5500 (touch pad)
 PS/2 or USB connection
 High quality gold crosspoint keyswitches w/ tactile keystroke
 20,000,000 lifecycles per switch
 Power: +5V DC @36mA max
 0-60 deg C operating temperature
 -40 - 65 deg C storage temperature
 MTBF >8.6M hours (>4.6M hours touch pad model)

Trackball Models

Integrated in keyboard
 14mm ball, optical technology
 400dpi resolution
 Two 'mouse' buttons

Touch Pad Models

Integrated in keyboard
 1000 dpi resolution
 Lifetime overlay: >10M finger strokes
 Two 'mouse' buttons

Trackball and touch pad Located bottom right for easy right-hand operation

Rear Panel Details

Includes cable management arm
 Cable Length: Approximately 36-inches (from rear of cable management arm)
 PS/2 Model: 2 PS/2 connectors for trackball and keyboard
 USB Model: 1 USB connector (trackball and keyboard signals on same connector)

Slides

General Devices C-300-S Solid Bearing Slides (Friction Slides)
 15.4-inches of travel
 Lock-out button
 Includes B-309 Extension Bracket (0 to 6.5-inch extension)
 Includes O3161600A-0200 Extension Bracket (3 to 11-inch extension)
 Other slides including ball bearing and zero-backlash optionally available

Agency Approvals

cURus, FCC, CE, VDE, C-Tick, VCCI, BSMI, WHQL, WEEE, RoHS

Shipping Weight

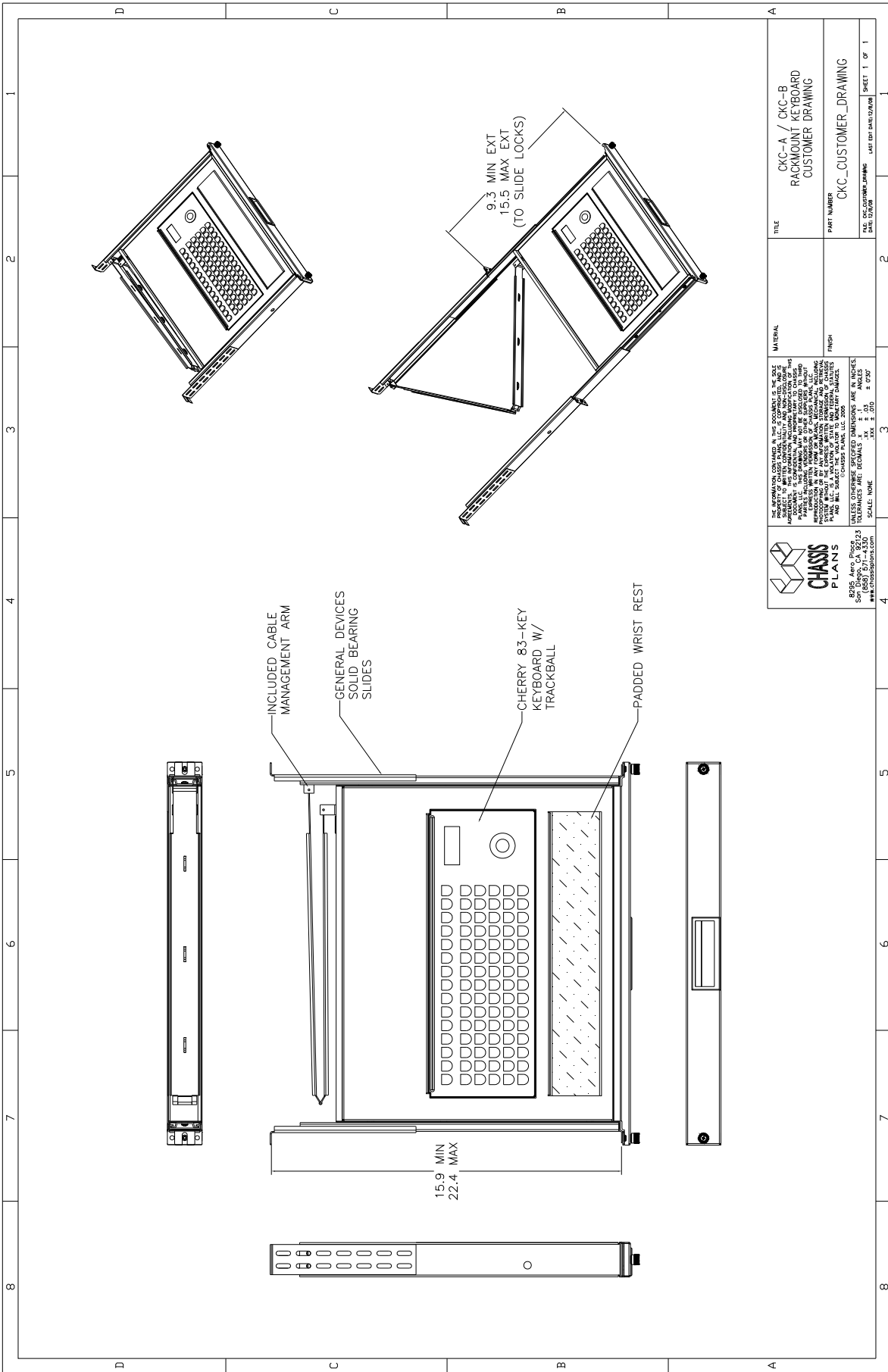
15lbs
 Shipping Box - 25 x 20 x 5"

Ordering Guide

Model Number	Interface		X-Designation	Installed Depth
CKC-A \underline{X}	PS/2	Track Ball	1	16-22 Inches
CKC-B \underline{X}	USB	Track Ball	2	20-26 Inches
CKC-C \underline{X}	PS/2	Touch Pad	3	21-30 Inches
CKC-D \underline{X}	USB	Touch Pad		

Example—CKC-A1: Trackball, PS/2 output w/ 16-22" slides





TITLE CKC-A / CKC-B RACKMOUNT KEYBOARD CUSTOMER DRAWING		PART NUMBER CKC_CUSTOMER_DRAWING	
MATERIAL UNLESS OTHERWISE SPECIFIED DIMENSIONS ARE IN INCHES. DECIMALS: .XX ± .05 FRACTIONS: 1/16 ± .005 SCALE: NONE		FINISH UNLESS OTHERWISE SPECIFIED DIMENSIONS ARE IN INCHES. DECIMALS: .XX ± .05 FRACTIONS: 1/16 ± .005 SCALE: NONE	
THE INFORMATION CONTAINED IN THIS DOCUMENT IS THE SOLE PROPERTY OF CHASSIS PLANS, LLC. IT IS TO BE USED ONLY FOR THE PROJECT AND SITE SPECIFICALLY IDENTIFIED HEREIN. ANY REUSE OR MODIFICATION OF THIS INFORMATION WITHOUT THE WRITTEN PERMISSION OF CHASSIS PLANS, LLC IS STRICTLY PROHIBITED. CHASSIS PLANS, LLC SHALL BE LIABLE FOR ANY DAMAGE, LOSS, OR INJURY RESULTING FROM THE USE OF THIS INFORMATION.		UNLESS OTHERWISE SPECIFIED DIMENSIONS ARE IN INCHES. DECIMALS: .XX ± .05 FRACTIONS: 1/16 ± .005 SCALE: NONE	
CHASSIS PLANS 8295 Ave. P 100023 Houston, TX 77044 (281) 771-4330 info@chassisplans.com		SHEET 1 OF 1	