

# CKX-Family

Waterproof NEMA 4 (IP65)  
Rackmount Keyboard w/  
Trackball

## RUGGED Military CLASS

SYSTEMS ENGINEERED TO PERFORM<sup>®</sup>



The **CKX** family are high performance NEMA4 1U keyboard drawers with built-in 38mm sealed trackball. Included is a high quality low profile sealed 83-key silicone keyboard which is impervious to liquid spills, dust, and dirt. The 38mm trackball is sealed to NEMA4 (IP65) standards, also resistant to liquid, dirt and dust.

The keyboard provides positive tactile feedback and is provided with a special Dura-coating for excellent mechanical and chemical resistance. Carbon-on-gold switch elements are used for reliability, typically 10-million operations per key.

The front of the drawer provides a comfortable padded palm rest. The drawer includes friction slides for mounting into a 19" rack. The use of rugged friction slides means the drawer stays where you put it for typing—not rolling in and out. Also included is a cable management arm.

The drawer includes screw locks to secure it into the rack for transportation. It's compact size and light weight rugged aluminum construction make it ideal for use in mobile applications such as transit case installations. The use of friction slides versus ball bearing slides allows it to be used in vehicular and mobile missions such as in the back of a moving Humvee.

Models are available with track ball with either PS/2 (CKX-APx) or USB (CKX-BUx) output connections. See page 2 for complete part numbers.



The Original Industrial Computer Source<sup>®</sup>

Chassis Plans · 10123 Carroll Canyon Rd · San Diego · CA · 92131  
Phone (858) 571-4330 · Fax (858) 571-6146  
salesteam@chassisplans.com  
www.chassisplans.com  
© 2010 Chassis Plans

**Dimensions**

19" (wide) x 1.72" (high) x 16" (deep)  
 Fits racks 16 to 22.4-inches deep with included adjustable slide brackets  
 Optional brackets for deeper racks  
 Min keyboard extension: 9.3-inches (to clear rear of keyboard)  
 Full keyboard extension: 15.5-inches (to lock engagement)  
 Aluminum alloy construction  
 Weight: 10.4 lbs (w/ 3 to 11-inch extensions installed)

**Keyboard**

Sealed full travel silicon keys with Dura-coating  
 NEMA4 (IP65) rated, water and dust proof  
 PS/2 or USB connection  
 High quality carbon-on-gold switch elements  
 Tactile keystroke  
 10,000,000 lifecycles per switch  
 Power: +5V DC @36mA max  
 Synchronous 8-bit data  
 -40 to 90 deg C operating and storage temperature

**Trackball**

Separate from keyboard assembly  
 38mm ball  
 Sealed to NEMA4 (IP65 static, IP54 dynamic) standards, water and dust proof from front surface  
 Two 'mouse' buttons  
 >6 million revolutions lifetime

**Rear Panel Details**

Includes cable management arm  
 Cable Length: Approximately 36-inches (from rear of cable management arm)  
 PS/2 Model: 2 PS/2 connectors for trackball and keyboard  
 USB Model: 1 USB connector (trackball and keyboard signals on same connector)

**Slides**

General Devices C-300-S Solid Bearing Slides (Friction Slides)  
 15.4-inches of travel  
 Lock-out button  
 Includes B-309 Extension Bracket (0 to 6.5-inch extension)  
 Includes 03161600A-0200 Extension Bracket (3 to 11-inch extension )  
 Other slides including ball bearing and zero-backlash optionally available

**Environmental**

Operating and storage temperature: -40 to 90 deg C

**Agency Approvals**

CE, VDE/ÜG (EN60950), FCC, cUL, VCCI, BSMI, C-Tick, GOST-R

**Shipping Weight**

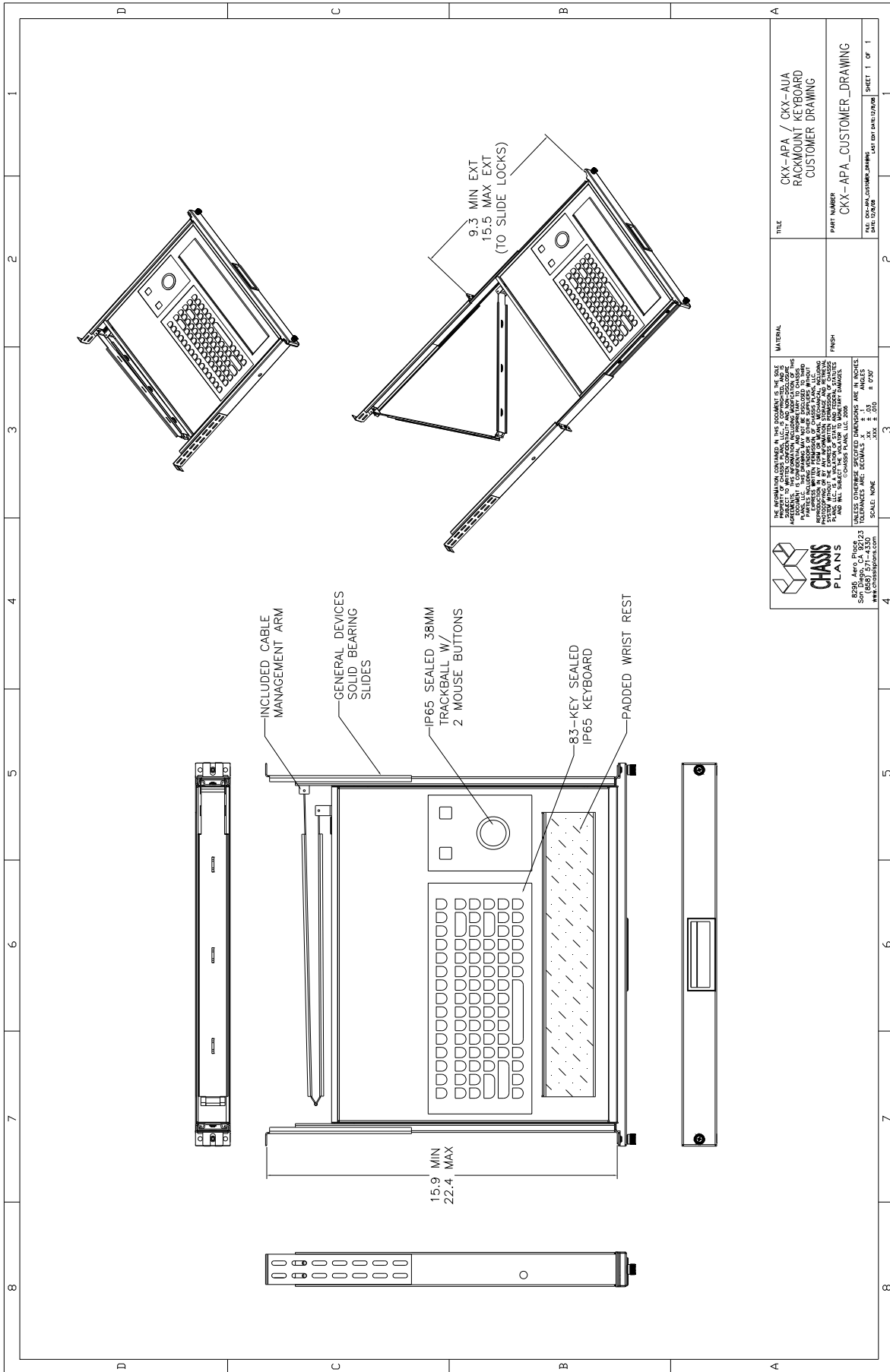
17lbs  
 Shipping Box - 25 x 20 x 5"

**Ordering Guide**

Model Number	Interface	*_-Designation	Installed Depth
CKX-AP*_	PS/2	A	16-22 Inches
CKX-BU*_	USB	B	20-26 Inches
		C	21-30 Inches

For example, the CKX-APC would provide a PS/2 interface with slide extensions for 21-30-inches.





<p>THE INFORMATION CONTAINED IN THIS DOCUMENT IS THE SOLE PROPERTY OF CHASSIS PLANS, INC. AND IS NOT TO BE REPRODUCED, COPIED, OR TRANSMITTED IN ANY FORM OR BY ANY MEANS, ELECTRONIC OR MECHANICAL, INCLUDING PHOTOCOPYING, RECORDING, OR BY ANY INFORMATION STORAGE AND RETRIEVAL SYSTEM, WITHOUT THE EXPRESS WRITTEN PERMISSION OF CHASSIS PLANS, INC.</p> <p>© CHASSIS PLANS, INC. 2009 10000 BAYVIEW BLVD., SUITE 100, SAN DIEGO, CA 92123 TEL: 619.444.1111 FAX: 619.444.1112 WWW.CHASSISPLANS.COM</p>	
TITLE	CKX-APA / CKX-AUA RACKMOUNT KEYBOARD CUSTOMER DRAWING
MATERIAL	FINISH
PART NUMBER	CKX-APA_CUSTOMER_DRAWING
<p>DATE: 07/20/09 DRAWN BY: JAMES W. HARRIS SHEET 1 OF 1</p>	