

CHASSIS PLANS

CPE2CKS-10



The **CPE2CKS-10** is a high performance 1U keyboard drawer. Included is a high quality low profile 83 key keyboard with integrated track ball or touch pad. The front of the drawer provides a comfortable padded palm rest. The drawer is held open by two button latches in the slides. Ball bearing slides are included along with mounting brackets to allow installation in any standard 19" rack.

Models are available with track ball or touch pad and either PS/2 or USB output connections.



The Original Industrial Computer Source®

Chassis Plans · 8295 Aero Place · San Diego · CA · 92123
Phone (858) 571-4330 · Fax (858) 571-6146
salesteam@chassisplans.com
www.chassisplans.com
© 2006 Chassis Plans

SPECIFICATION

Dimensions

19" (wide) x 1.75" (high) x 23" (deep)

Keyboard

PS/2 connection

High quality gold crosspoint keyswitches

Tactile keystroke

5,000,000 lifecycles per switch

Power: +5V DC @100 mA max

Synchronous 8-bit data

0-50 deg C operating temperature

-10 - 60 deg C storage temperature

Trackball

Integrated in keyboard

16mm ball, optical technology

Two 'mouse' keys

Located upper right for easy right-hand operation

Touch Pad

Integrated in keyboard

Three 'mouse' keys

Located upper right for easy right-hand operation

Regulations

UL, CSA, CE/ENC, DHHS, NORDICS, TUV/GS, 1S09241-3, FCC-B, MPR II, TCO 95

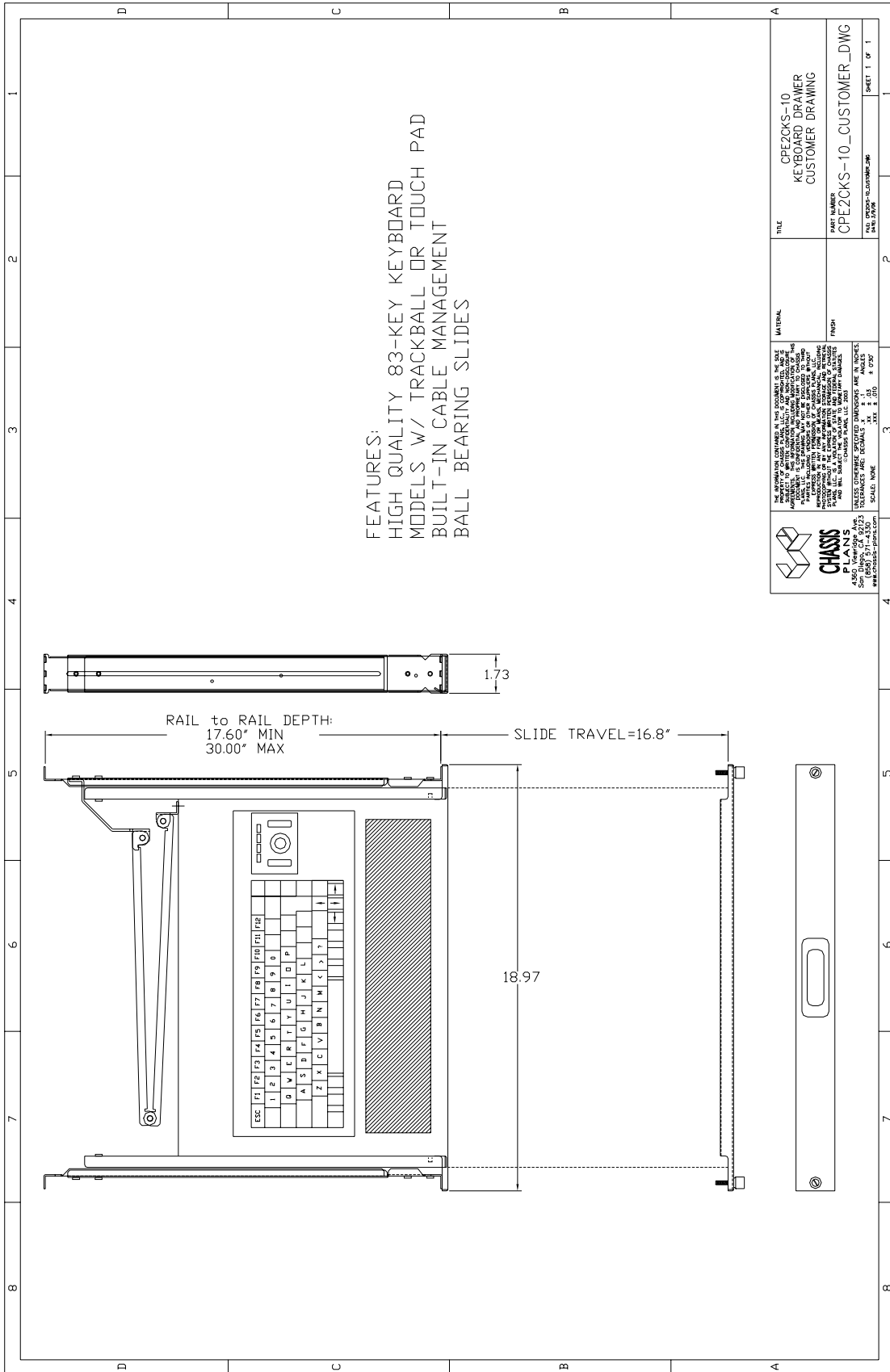
Shipping Weight

17lbs


Shipping Box - 25 x 20 x 5"

Ordering Guide

Model Number	Trackball	Touch Pad	PS/2	USB
CPE2CKS-10-PTB	•		•	
CPE2CKS-10-UTB	•			•
CPE2CKS-10-PTP		•	•	
CPE2CKS-10-UTP		•		•



FEATURES:
 HIGH QUALITY 83-KEY KEYBOARD
 MODELS W/ TRACKBALL OR TOUCH PAD
 BUILT-IN CABLE MANAGEMENT
 BALL BEARING SLIDES

 <p>CHASSIS PLANS 3000 W. 10th St. # 212 Scottsdale, AZ 85259 (602) 271-4500 www.chassisplans.com</p>	<p>PROPERTY OF CHASSIS PLANS, INC. IS RESERVED. THIS IS A PRELIMINARY DRAWING AND NOT FOR CONSTRUCTION. THE USER SHALL BE RESPONSIBLE FOR OBTAINING ALL NECESSARY PERMITS AND APPROVALS FROM ALL APPLICABLE AGENCIES. CHASSIS PLANS, INC. SHALL NOT BE RESPONSIBLE FOR ANY DAMAGE TO PROPERTY OR PERSONS ARISING FROM THE USE OF THIS DRAWING. THE USER SHALL BE RESPONSIBLE FOR OBTAINING ALL NECESSARY PERMITS AND APPROVALS FROM ALL APPLICABLE AGENCIES. CHASSIS PLANS, INC. SHALL NOT BE RESPONSIBLE FOR ANY DAMAGE TO PROPERTY OR PERSONS ARISING FROM THE USE OF THIS DRAWING.</p>	TITLE	CPE2CKS-10 KEYBOARD DRAWER CUSTOMER DRAWING
	MATERIAL	FINISH	PART NUMBER CPE2CKS-10_CUSTOMER_DWG
SCALE: NONE	SCALE: NONE	DATE: 07/20/2006	SHEET 1 OF 1