

CPL-2017

17" Rack Mount 1280x1024

RUGGED ENTERPRISE CLASS

SYSTEMS ENGINEERED TO PERFORM™



The CPL-2017 is a high performance rack mount 1U 17" SXGA TFT LCD display with 1280 X 1024 resolution. The display offers 250nit brightness, 350:1 contrast, and 75 degree viewing angle for exceptional viewability. An anti-glare hard coating minimizes reflections making images much more clear. The aspect ratio is 5:4 with a Pixel Pitch of only 0.264mm. It will display 16.7 million colors (True Color).

The monitor pivots upward from a flat position of 0 degrees to an upright position of 125 degrees.

The CPL-2017 provides multiple signal input options including aRGB, DVI-D, S-Video and CVS.

As with all Chassis Plans products, a wide variety of custom options are available.

ENCLOSURE

- 1U (1.71") x 20" deep
- Rapid Start Design (less than 5 minutes installation)
- Designed to Satisfy Military, Industrial and Commercial Requirements
- Compact Enclosure for Limited Depth Installation

DISPLAY

- 17" Diagonal Active Matrix SXGA TFT LCD
- Features Samsung and LG Technology
- 1280 x 1024 @ 60Hz Native Resolution
- Non-glare hard coat surface

VIDEO CONTROLLER

- Standard aRGB, DVI-D, S-Video and CVS Inputs
- OSD (On Screen Display) for Monitor Setup and Control

OPTIONAL FEATURES / OPTIONS

- Abrasion Resistant Lens Cover
- Protective Glare Filters
- Customer Specified Paint Color
- Customer Logo



The Original Industrial Computer Source®

Chassis Plans · 8295 Aero Place · San Diego · CA · 92123
Phone (858) 571-4330 · Fax (858) 571-6146
saleseng@chassisplans.com
www.chassisplans.com
© 2008 Chassis Plans

ENCLOSURE

1U x 19" (wide) x 20" (deep)
 Fits 20"-36" Rack
 Weight: 32.0lbs
 Color: Powder coated black, light texture
 (Custom colors and logos available)

DISPLAY

17" TFT LCD w/ anti glare hard coating
 Display Colors: 16.7 Million
 Response Time (Tr / Tf): 5/20 ms
 Viewing Angle: 75/70/60/60 deg
 Contrast Ratio: 350:1 typical
 Brightness: 250cd/m2 typical
 Pixel Pitch: 0.264mm x 0.264mm
 Power: EPA Energy Star, VESA DPMS

DISPLAY RESOLUTION

Max Resolution: SXGA 1280 x 1024 @ 60Hz
 Horizontal Frequency: 15-80KHz
 Vertical Frequency: 50-77Hz

ON SCREEN DISPLAY

Contrast, Brightness, Autosetting, Clock /
 Phase, Horizontal & Vertical Position / Ex-
 pansion / OSD, Text & Graph Mode Selec-
 tion, Color Temp, Recall

REGULATIONS

FCC-A, CE
 Optional UL, CSA, TUV

CONNECTORS:

aRGB in: 15-pin high density DB15
 DVI-D in: DVI-D 23-pin female
 CSV in: RCA Plug
 S-Video In: 4-Pin Mini Din
 DC Power In: 2-Pin 2x5.5 Power Plug

ENVIRONMENTAL

Operating conditions:
 Temperature: 0 to 50 deg C
 Humidity: 20% to 95% non-condensing
 Altitude: 10,000 feet

Storage conditions:

Temperature: -25 to 60 deg C
 Humidity: 5% to 95% non-condensing
 Altitude: 24,000 feet

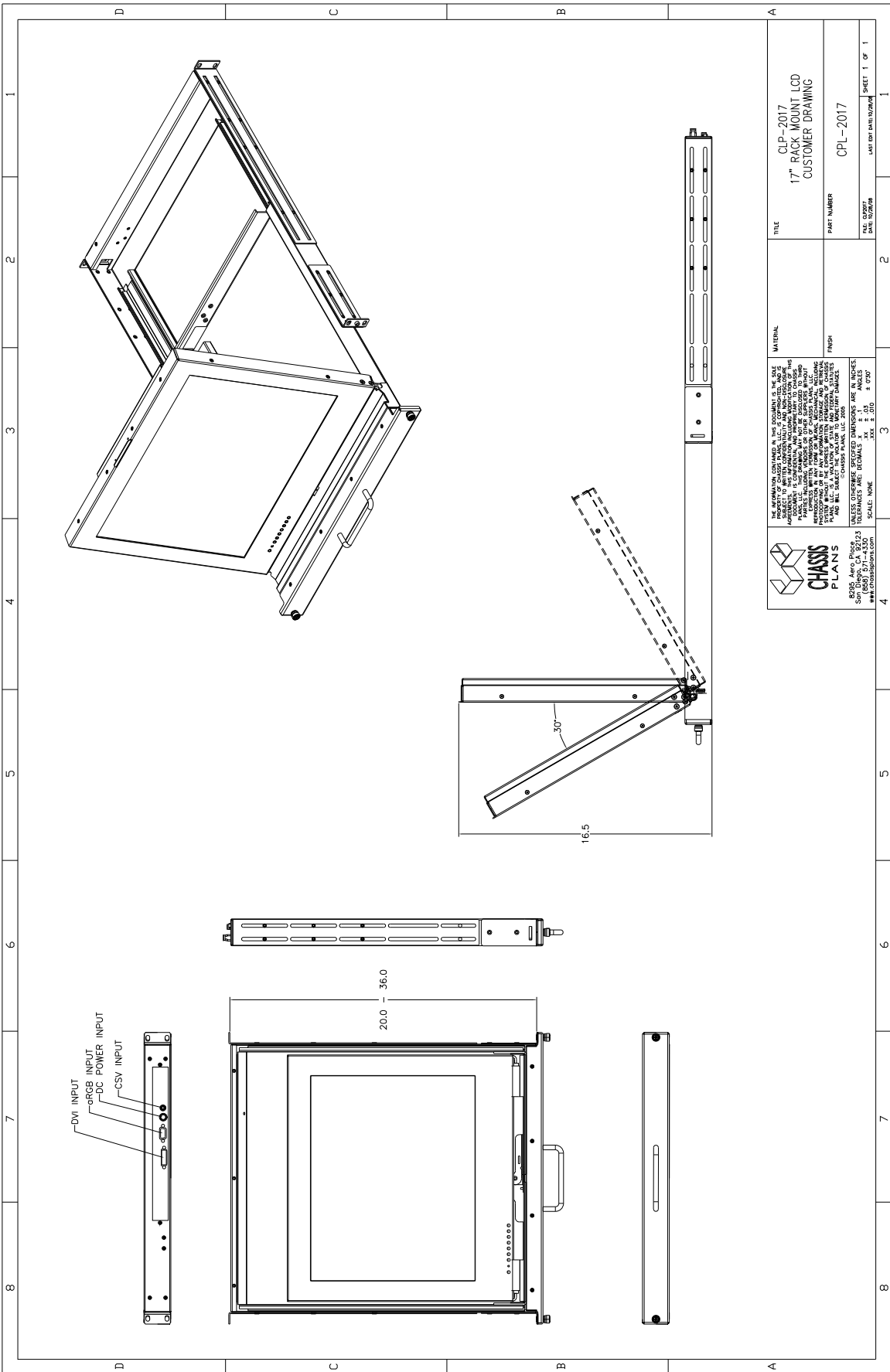
SHIPPING

Weight: 37lbs
 Shipping Box - 23" x 6" x 33"

ORDERING GUIDE

Ordering Code	Description
CPL-2017-1A	Capacitive Touch Screen, Serial Port, aRGB input
CPL-2017-2A	Capacitive Touch Screen, USB Port, aRGB input
CPL-2017-3A	Resistive Touch Screen, Serial Port, aRGB input
CPL-2017-4A	Resistive Touch Screen, USB port, aRGB input
CPL-2017-13A	No touch Screen, aRGB input
CPL-2017-13V	No touch Screen, aRGB, DVI-D, S-Video, and CVS inputs





<p>THE INFORMATION CONTAINED IN THIS DOCUMENT IS THE SOLE PROPERTY OF CHASSIS PLANS. IT IS TO BE USED ONLY FOR THE PROJECT AND SYSTEM SPECIFICALLY IDENTIFIED HEREIN. THIS DOCUMENT IS CONFIDENTIAL AND INFORMATION IS TO BE KEPT IN STRICTLY CONFIDENTIAL. ANY INFORMATION CONTAINED HEREIN IS TO BE KEPT IN STRICTLY CONFIDENTIAL. ANY INFORMATION CONTAINED HEREIN IS TO BE KEPT IN STRICTLY CONFIDENTIAL. ANY INFORMATION CONTAINED HEREIN IS TO BE KEPT IN STRICTLY CONFIDENTIAL.</p>	
<p>8538 Main Place San Diego, CA 92123 www.chassisplans.com</p>	<p>DATE: 05/20/17 DATE: 05/20/17</p>
<p>SCALE: NONE</p>	<p>SCALE: NONE</p>
<p>CHASSIS PLANS</p>	<p>CHASSIS PLANS</p>
<p>17" RACK MOUNT LCD CUSTOMER DRAWING</p>	<p>17" RACK MOUNT LCD CUSTOMER DRAWING</p>
<p>CLP-2017</p>	<p>CLP-2017</p>
<p>PART NUMBER</p>	<p>PART NUMBER</p>
<p>LAST ENT DATED/REVISED</p>	<p>LAST ENT DATED/REVISED</p>
<p>SHEET 1 OF 1</p>	<p>SHEET 1 OF 1</p>