

CHASSIS PLANS



The CPL-A1617U is a high performance rack mount 1U 17" TFT LCD display with 1280 X 1024 SXGA resolution that is only 16" deep. The lightweight chassis is all aluminum and is optimized for portable applications. The display offers 250nit brightness, 350:1 contrast, and 75 degree viewing angle for exceptional viewability. An anti-glare hard coating minimizes reflections making images much more clear. The aspect ratio is 4:3 with a Pixel Pitch of only 0.264mm. It will display 16.7 million colors (True Color).

The monitor pivots down from a flat position of 0 degrees to an open position of up to 119 degrees.

The CPL-A1617U provides an analog RGB signal input.

As with all Chassis Plans products, a wide variety of custom options are available including custom paint color, customer logo, anti-glare shield, sun light filters, etc.

Designed and manufactured in the USA.



The Original Industrial Computer Source®

CPL-A1617U

ENCLOSURE

- 1U (1.71") x 16" deep
- *Lightweight all aluminum chassis*
- *Designed to satisfy military, industrial and commercial requirements*
- *Compact enclosure for limited depth installation*
- *Continuous Friction Hinges*
- *Built-in cable management*
- *Slides included*

DISPLAY

- *17" Diagonal Active Matrix TFT LCD*
- *Features Samsung display technology*
- *SXGA 1208 x 1024 @ 60Hz native resolution*
- *Fast response time for real-time display*

VIDEO CONTROLLER

- *Standard aRGB Input*
- *OSD (On Screen Display) for Monitor Setup and Control*

OPTIONAL FEATURES / OPTIONS

- *Abrasion Resistant Lens Cover*
- *Protective Glare Filters*
- *Customer Specified Paint Color*
- *Customer Logo*

COMPANION DISPLAY

The companion CPL-A1617 display is identical except it is intended for the monitor to swing up. Thus, mounting the CPL-A1617U under the CPL-A1617 provides a double high display utilizing only 2U of rack space.

SPECIFICATION

ENCLOSURE

1U x 19" (wide) x 16" (deep)
Fits 20"-36" Rack
Weight: 12.0lbs
Lightweight Aluminum Construction
Color: Powder coated black, light texture
(Custom colors and logos available)

DISPLAY

17" TFT LCD w/ antiglare hard coating
Display Colors: 16.7 Million
Response Time (Tr / Tf): 5/20 ms
Viewing Angle: 75/70/60/60 deg
Contrast Ratio: 350:1 typical
Brightness: 250cd/m2 typical
Pixel Pitch: 0.264mm x 0.264mm
Power: EPA Energy Star, VESA DPMS

DISPLAY RESOLUTION

Max Resolution: SXGA 1280 x 1024 @ 60Hz
12 Display Modes: VGA to SXGA
Horizontal Frequency: 15-80KHz
Vertical Frequency: 50-77Hz

ON SCREEN DISPLAY (OSD)

Contrast, Brightness, Autosetting, Clock /
Phase, Horizontal & Vertical Position / Ex-
pansion / OSD, Text & Graph Mode Selec-
tion, Color Temp, Recall

CERTIFICATIONS

FCC-A, CE
Optional UL, CSA, CE/ENC, DHHS,
NORDICS, TUV/GS, 1S09241-3,
FCC-B, MPR II, TCO 95

CONNECTORS:

aRGB in: 15-pin high density DB15
DC Power In: 2-Pin 2x5.5 Power Plug

POWER CONSUMPTION

Input Voltage: 12VDC Nominal
Normal: 60W (front LED Green)
DPM Stand-by/Suspend: <5W (front LED Amber)
DPM Off: <3W (front LED Amber)
Power Switch Off: <1W (front LED Off)
Power Supply: Remote "brick" switching supply
Power Supply Size: 4.8" x 2.4" x 1.5", 12oz
Power Input: 100-240VAC, 50/60Hz 1.8A
Optional -48VDC input available

ENVIRONMENTAL

Operating conditions:
Temperature: 0 to 50 deg C
Humidity: 20% to 95% non-condensing
Altitude: 10,000 feet

Storage conditions:

Temperature: -25 to 60 deg C
Humidity: 5% to 95% non-condensing
Altitude: 24,000 feet

SHIPPING

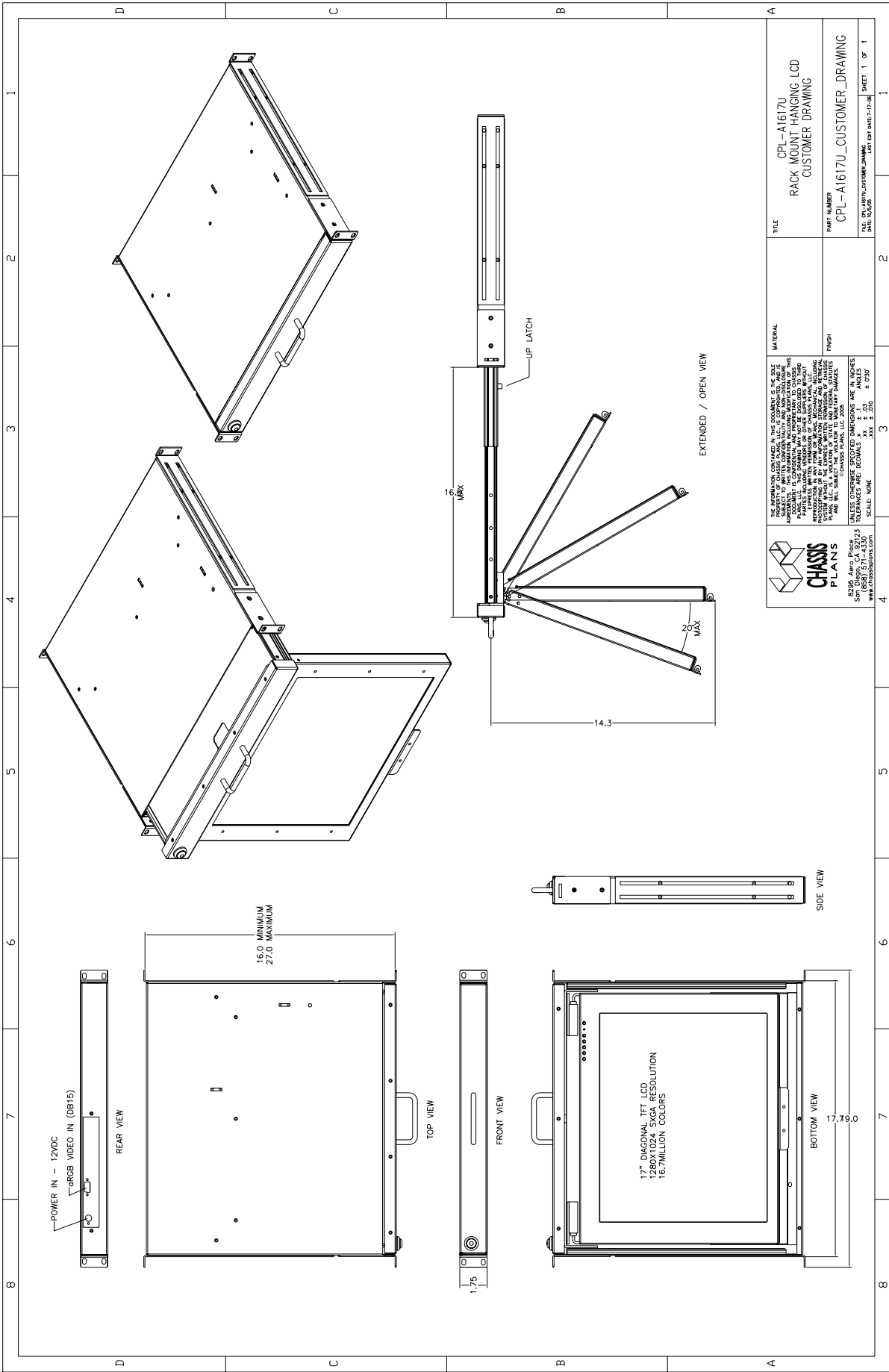
Weight: 37lbs
Shipping Box - 23" x 6" x 33"

Ordering Code	Description
CPL-A1617U-13A	No touch screen, aRGB input



The Original Industrial Computer Source®

May 25, 2006



<p>THE INFORMATION CONTAINED IN THIS DOCUMENT IS THE SOLE PROPERTY OF CHASSIS PLANS, INC. IT IS TO BE USED ONLY FOR THE PROJECT AND FOR THE CUSTOMER'S USE. CHASSIS PLANS, INC. SHALL NOT BE RESPONSIBLE FOR ANY REPRODUCTION OR DISTRIBUTION OF THIS DOCUMENT WITHOUT THE WRITTEN PERMISSION OF CHASSIS PLANS, INC. CHASSIS PLANS, INC. IS NOT RESPONSIBLE FOR ANY REPRODUCTION OR DISTRIBUTION OF THIS DOCUMENT WITHOUT THE WRITTEN PERMISSION OF CHASSIS PLANS, INC. CHASSIS PLANS, INC. IS NOT RESPONSIBLE FOR ANY REPRODUCTION OR DISTRIBUTION OF THIS DOCUMENT WITHOUT THE WRITTEN PERMISSION OF CHASSIS PLANS, INC.</p> <p>© CHASSIS PLANS, LLC 2008 CHASSIS PLANS, INC. 8206 Ave. Plaza San Diego, CA 92123 WWW.CHASSISPLANS.COM</p>		<p>TITLE CPL-A167U RACK MOUNT HANGING LCD CUSTOMER DRAWING</p>
<p>MATERIAL</p>		<p>PART NUMBER CPL-A167U_CUSTOMER_DRAWING</p>
<p>FINISH</p>		<p>DATE 10/20/08 SHEET 1 OF 1</p>