

CHASSIS PLANS



The CPPM-8U17 is a high performance rack mount 8U 17" TFT LCD display with 1280 x 1024 resolution. The display offers 250nit brightness, 350:1 contrast, and 70 degree viewing angle for exceptional viewability. An anti-glare hard coating minimizes reflections making images that much clearer. The aspect ratio is 4:3 with a Pixel Pitch of only 0.264mm. It will display 16.7 million colors (True Color).

With only 3" of depth, the CPPM-8U17 is perfect for rack, wall, panel, or kiosk installations. It can be used in Industrial, Commercial, Military, or Broadcast applications.

The CPPM-8U17 has a standard aRGB signal input plus optional DVI-D, S-Video, and CVS.

As with all Chassis Plans products, a wide variety of custom options are available.

Designed and manufactured in the USA.

CPPM-8U17

ENCLOSURE

- 19" x 8U (13.97") x 3" deep
- *Designed to satisfy military, industrial and commercial requirements*
- *Compact enclosure for limited depth installation*
- *Rugged steel construction*

DISPLAY

- 17" Active Matrix TFT LCD
- *Features High Quality LCD Technology*
- *SXGA 1280 x 1024 @ 60Hz Native Resolution*
- *12 Video modes*
- *Fast response time for real-time video*

VIDEO CONTROLLER

- *Standard analog RGB input*
- *Optional DVI, S-Video, and Composite video input*
- *OSD (On Screen Display) for monitor setup and control*

POWER

- *+12VDC Operation with included universal AC power supply*
- *Low power consumption*

OPTIONAL FEATURES / OPTIONS

- *Touch Screens: resistive or capacitive*
- *Protective glare filters*
- *Customer specified paint color*
- *Customer logo*



The Original Industrial Computer Source®

Chassis Plans · 8295 Aero Place · San Diego · CA · 92123
 Phone (858) 571-4330 · Fax (858) 571-6146
saleseng@chassisplans.com
www.chassisplans.com
 © 2005 Chassis Plans

ENCLOSURE

19" (wide) x 8U (13.97") (high) x 3.0" (deep)
 Weight: 19.0lbs
 Rugged steel construction
 Color: Powder coated black, light texture
 (Custom colors and logos available)

DISPLAY

High Quality 17" TFT LCD w/ antiglare
 hard coating
 Display Colors: 16.7 Million
 Response Time (Tr/Tf): 5/20mS
 Viewing Angle: 75/70/60/60 deg
 Contrast Ratio: 350:1 typical
 Brightness: 250cd/m2 typical
 Pixel Pitch: 0.264mm x 0.264mm
 Power Management: EPA Energy Star, VESA
 Compliant

DISPLAY RESOLUTION

Max Resolution: SXGA 1280 x 1024 @ 60Hz
 12 Display Modes SXGA
 Horizontal Frequency: 15-80KHz Automatic
 Vertical Frequency: 50-77Hz Automatic

CONNECTORS:

Standard
 aRGB: 15-pin high density DB15
 Power: 2 Pin 2.0 x 5.5mm power
 Optional
 DVI: DVI-I 23-pin female
 Composite: RCA Plug
 S-Video In: 4-Pin Mini Din
 Touch Screen: USB Type A or Serial DB9

ON SCREEN DISPLAY

Contrast, Brightness, Autosetting, Clock / Phase,
 Horizontal & Vertical Position / Expansion / OSD,
 Text & Graph Mode Selection, Color Temp, Re-
 call, Video Source

REGULATIONS

CE, FCC
 Optional UL, CSA, CE/ENC, DHHS,
 NORDICS, TUV/GS, 1S09241-3,

POWER CONSUMPTION

Normal: 60W (front LED Green)
 DPM Stand-by/Suspend: <5W (front LED Amber)
 DPM Off: <3W (front LED Amber)
 Power Switch Off: <1W (front LED off)
 Power Supply: Remote "brick" switching supply
 Power Supply Size: 4.8" x 2.4" x 1.5", 12oz
 Power Input: 100-240VAC, 50/60Hz 1.8A
 Optional -48VDC input available

ENVIRONMENTAL

Operating conditions:
 Temperature: 0 to 50 deg C
 Humidity: 20% to 90% non-condensing
 Altitude: 10,000 feet

Storage conditions:

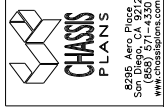
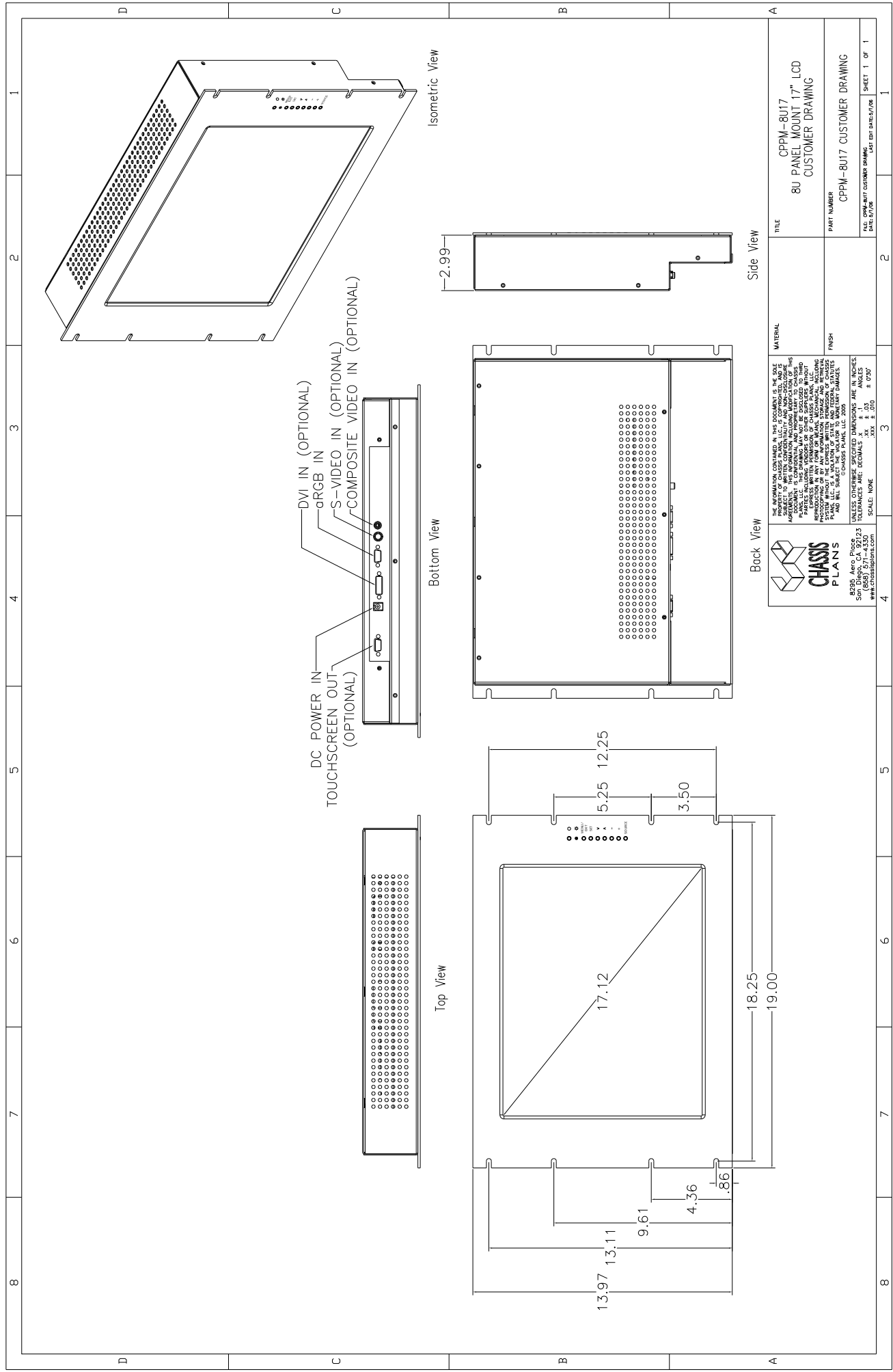
Temperature: -25 to 60 deg C
 Humidity: 5% to 95% non-condensing
 Altitude: 24,000 feet

SHIPPING

Weight: 19lbs
 Shipping Box - 24" x 7" x 21"

Ordering Code	Description
Video Input: Analog RGB Input Only	
CPPM8U17-14A	No Touch Screen
CPPM8U17-1A	Capacitive Touch Screen, Serial Output
CPPM8U17-2A	Capacitive Touch Screen, USB Output
CPPM8U17-3A	Resistive Touch Screen, Serial Output
CPPM8U17-4A	Resistive Touch Screen, USB Output
Video Input: Analog RGB, DVI-D, S-Video, Composite Video	
CPPM8U17-14V	No Touch Screen
CPPM8U17-1V	Capacitive Touch Screen, Serial Output
CPPM8U17-2V	Capacitive Touch Screen, USB Output
CPPM8U17-3V	Resistive Touch Screen, Serial Output
CPPM8U17-4V	Resistive Touch Screen, USB Output





THE INFORMATION CONTAINED IN THIS DOCUMENT IS THE SOLE PROPERTY OF CHASSIS PLANS, LLC. IT IS UNCLASSIFIED AND IS UNRESTRICTED. THIS INFORMATION, INCLUDING A PORTION OF THE DRAWING, IS THE PROPERTY OF CHASSIS PLANS, LLC. THIS DRAWING MAY NOT BE REPRODUCED OR TRANSMITTED IN ANY FORM OR BY ANY MEANS, ELECTRONIC OR MECHANICAL, INCLUDING PHOTOCOPYING, RECORDING, OR BY ANY INFORMATION STORAGE AND RETRIEVAL SYSTEM, WITHOUT THE EXPRESS WRITTEN PERMISSION OF CHASSIS PLANS, LLC. THIS DRAWING IS THE PROPERTY OF CHASSIS PLANS, LLC AND WILL REMAIN THE PROPERTY OF CHASSIS PLANS, LLC. © CHASSIS PLANS, LLC 2008

UNLESS OTHERWISE SPECIFIED, DIMENSIONS ARE IN INCHES.
 .125 = .003
 .25 = .006
 .50 = .010
 .75 = .015
 1.00 = .020
 SCALE: NONE

TITLE	CPPM-8U17 8U PANEL MOUNT 17" LCD CUSTOMER DRAWING
PART NUMBER	CPPM-8U17 CUSTOMER DRAWING
DATE	08/04/08
DESIGNED BY	EDD/BAKES/706
CHECKED BY	
DATE	
SHEET	1 OF 1