

# CHASSIS PLANS



The CPPM-8U19 is a high performance rack mount 8U 19" TFT LCD display with 1280 x 1024 resolution. The display offers 250nit brightness, 350:1 contrast, and 85 degree viewing angle for exceptional viewability. An anti-glare hard coating minimizes reflections making images that much clearer. The aspect ratio is 4:3 with a Pixel Pitch of only 0.298x0.294mm. It will display 16.7 million colors (True Color).

With only 3" of depth, the CPPM-8U19 is perfect for rack, wall, panel, or kiosk installations. It can be used in Industrial, Commercial, Military, or Broadcast applications.

The CPPM-8U19 provides multiple signal input options including aRGB, DVI-D, S-Video and Composite video input.

As with all Chassis Plans products, a wide variety of custom options are available.

***Designed and manufactured in the USA.***

## ***CPPM-8U19***

### **ENCLOSURE**

- 19" SXGA 1280 x 1024 TFT LCD
- *Designed to satisfy military, industrial and commercial requirements*
- *Compact enclosure for limited depth installation*
- *Rugged steel construction*

### **DISPLAY**

- 19" Active Matrix TFT LCD
- *Features High Quality LCD Technology*
- *SXGA 1280 x 1024 @ 60Hz Native Resolution*
- *12 Video modes*

### **VIDEO CONTROLLER**

- *Standard aRGB, DVI, S-Video and Composite video inputs*
- *OSD (On Screen Display) for monitor setup and control*

### **POWER**

- *+12VDC Operation with Included Universal AC Power Supply*
- *Low Power Consumption*

### **OPTIONAL FEATURES / OPTIONS**

- *Touch Screens: resistive or capacitive*
- *Protective glare filters*
- *Customer specified paint color*
- *Customer logo*



The Original Industrial Computer Source®

Chassis Plans · 8295 Aero Place · San Diego · CA · 92123  
 Phone (858) 571-4330 · Fax (858) 571-6146  
[saleseng@chassisplans.com](mailto:saleseng@chassisplans.com)  
[www.chassisplans.com](http://www.chassisplans.com)  
 © 2005 Chassis Plans

## ENCLOSURE

19" (wide) x 8u (13.97") (high) x 3.0" (deep)  
Weight: 19.0lbs  
Rugged steel construction  
Color: Powder coated black, light texture  
(Custom colors and logos available)

## DISPLAY

High Quality 19" TFT LCD w/ antiglare hard coating  
Response Time (Tr/Tf): 15/10mS  
Viewing Angle: 85/85/85/85 deg  
Contrast Ratio: 350:1 typical  
Brightness: 250cd/m2 typical  
Pixel Pitch: 0.298mm x 0.294mm  
Power Management: EPA Energy Star, VESA Compliant

## DISPLAY RESOLUTION

Max Resolution:  
SXGA 1280 x 1024 @ 60Hz  
12 Display Modes SXGA  
Horizontal Frequency: 15-80KHz Automatic  
Vertical Frequency: 50-77Hz Automatic

## CONNECTORS:

aRGB: 15-pin high density DB15  
DVI: DVI-I 23-pin female  
Composite: RCA Plug  
S-Video In: 4-Pin Mini Din  
Touch Screen: USB Type A or Serial DB9  
Power: 2 Pin 2.0 x 5.5mm power

## ON SCREEN DISPLAY

Contrast, Brightness, Autosetting, Clock / Phase, Horizontal & Vertical Position / Expansion / OSD, Text & Graph Mode Selection, Color Temp, Recall, Video Source

## REGULATIONS

CE, FCC  
Optional UL, CSA, CE/ENC, DHHS,  
NORDICS, TUV/GS, 1S09241-3,  
FCC-B, MPR II, TCO 95

## POWER CONSUMPTION

Normal: 60W (front LED Green)  
DPM Stand-by/Suspend: <5W (front LED Amber)  
DPM Off: <3W (front LED Amber)  
Power Switch Off: <1W (front LED Off)  
Power Input: 100-240VAC, 50/60Hz 1.2A  
Power Cord: DC-outlet type

## ENVIRONMENTAL

Operating conditions:  
Temperature: 0 to 50 deg C  
Humidity: 20% to 90% non-condensing  
Altitude: 10,000 feet

## Storage conditions:

Temperature: -25 to 60 deg C  
Humidity: 5% to 95% non-condensing  
Altitude: 24,000 feet

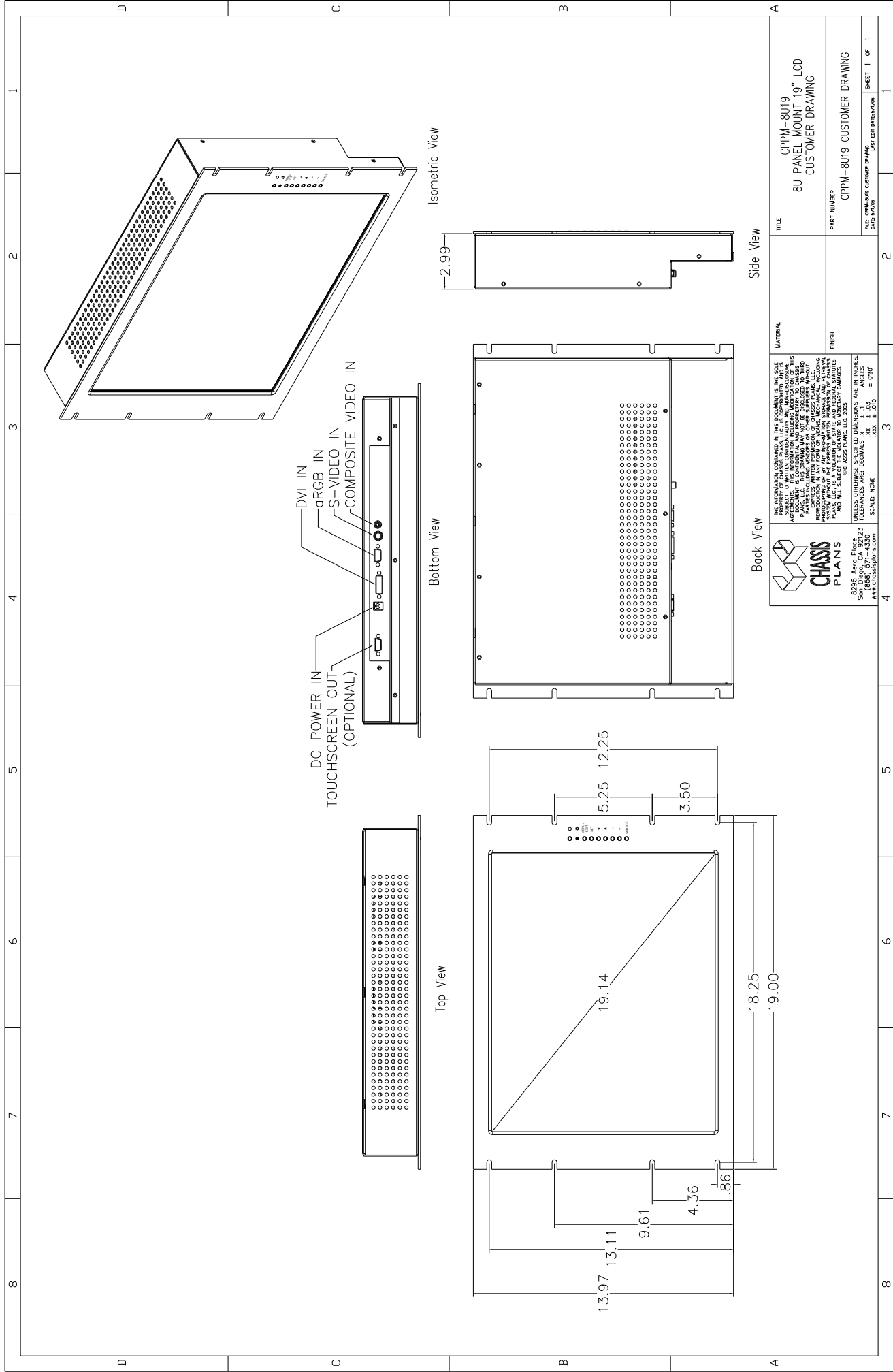
## SHIPPING

Weight: 19lbs  
Shipping Box - 24" x 7" x 21"

Ordering Code	Description
CPPM8U19-14V	No Touch Screen
CPPM8U19-1V	Capacitive Touch Screen, Serial Output
CPPM8U19-2V	Capacitive Touch Screen, USB Output
CPPM8U19-3V	Resistive Touch Screen, Serial Output
CPPM8U19-4V	Resistive Touch Screen, USB Output



The Original Industrial Computer Source®



8295 Aero Plus 23  
3000  
(868) 571-4350  
www.chassisplans.com

THE INFORMATION CONTAINED IN THIS DRAWING IS THE PROPERTY OF CHASSIS PLANS, L.L.C. IT IS TO BE USED IN ACCORDANCE WITH THE AGREEMENT AND INFORMATION INCLUDING MODIFICATION OF THIS DRAWING. THIS DRAWING MAY NOT BE REPRODUCED, COPIED, OR TRANSMITTED IN ANY FORM OR BY ANY MEANS, ELECTRONIC OR MECHANICAL, INCLUDING PHOTOCOPYING, RECORDING, OR BY ANY INFORMATION STORAGE AND RETRIEVAL SYSTEM, WITHOUT THE EXPRESS WRITTEN PERMISSION OF CHASSIS PLANS, L.L.C. THIS DRAWING IS A UNLESS OTHERWISE SPECIFIED DIMENSIONS ARE IN INCHES. TOLERANCES ARE DECIMALS .XX ± .03 ± .020  
SCALE: NONE .XXX ± .010  
© CHASSIS PLANS, L.L.C. 2009

TITLE	CPPM-8U19 8U PANEL MOUNT 19" LCD CUSTOMER DRAWING
MATERIAL	
FINISH	
PART NUMBER	CPPM-8U19 CUSTOMER DRAWING
FILE: CPPM-8U19 CUSTOMER DRAWING	
DATE: 5/1/08	
LAC: EEP DATE: 5/1/08	
SHEET: 1 OF 1	