

CPPM-8U201

Rackmount Keyboard

RUGGED ENTERPRISE CLASS

SYSTEMS ENGINEERED TO PERFORM[®]

CPPM-8U201



The CPPM-8U201 is a high performance rack mount 8U 20.1" TFT LCD display with 1600x1200 resolution. The display offers 250nit brightness, 400:1 contrast, and 89 degree viewing angle for exceptional viewability. An anti-glare hard coating minimizes reflections making images that much clearer. The aspect ratio is 4:3 with a Pixel Pitch of only 0.255mm. It will display 16.7 million colors (True Color).

With only 3" of depth, the CPPM-8U201 is perfect for rack, wall, panel, or kiosk installations. It can be used in Industrial, Commercial, Military, or Broadcast applications. Its lightweight but rugged aluminum construction makes it perfect for mobile installations.

The CPPM-8U201 provides multiple signal input options including aRGB, DVI-D, NTSC, Pal S-Video and Composite Video.

As with all Chassis Plans products, a wide variety of custom options are available.



Systems Engineered to Perform[®]

ENCLOSURE

- 20.1" UXGA 1600x1200 TFT LCD
- 8U (13.97") x 3" deep
- Rugged all aluminum construction
- Designed to Satisfy Military, Industrial and Commercial Requirements
- Compact Enclosure for Limited Depth Installation

DISPLAY

- Largest LCD Panel that can fit within the standard rack constraints.
- 20.1" Diagonal Active Matrix UXGA TFT LCD
- Featuring High Quality LCD Technology
- 1600 x 1200 @ 60Hz Native Resolution

VIDEO CONTROLLER

- Standard aRGB, DVI-D, S-Video and Composite Video Inputs
- OSD (On Screen Display) for Monitor Setup and Control
- Picture-in-Picture
- Audio Input and Output with Built-In Amplifier (Speakers Not Included)

POWER

- +18VDC Operation with Included Universal AC Power Supply
- Low Power Consumption

OPTIONAL FEATURES / OPTIONS

- Touch Screens: Resistive or Capacitive
- Enhanced Backlighting
- Protective Glare Filters
- Customer Specified Paint Color
- Customer Logo

ENCLOSURE

19" (wide) x 13.97" (high) x 3.0" (deep)
 Weight: 13.0lbs (5.9Kgs)
 Color: Powder coated black, light texture
 (Custom colors and logos available)

DISPLAY

High Quality 20.1" TFT LCD w/ antiglare hard coating
 Display area: 408mm x 306mm
 Display Colors: 16.7 Million
 Response Time (Tr/Tf): 9/7mS
 Viewing Angle: 89/89/89/89 deg
 Contrast Ratio: 400:1 typical
 Brightness: 250cd/m2 typical
 Pixel Pitch: 0.255mm x 0.255mm
 Power Management: EPA Energy Star, VESA DPMS

DISPLAY RESOLUTION

Max Resolution:
 D-Sub: Analog - UXGA 1600 x 1200 @ 75Hz
 DVI: UXGA 1600 x 1200 @ 60Hz
 Recommended Resolution: UXGA 1600 x 1200 @ 60Hz
 19 Display Modes VGA to UXGA
 Horizontal Frequency: 15-80KHz Automatic
 Vertical Frequency: 60-75Hz Automatic

CONNECTORS:

aRGB: 15-pin high density DB15
 DVI: DVI-I 23-pin female
 Composite: RCA Plug
 S-Video In: 4-Pin Mini Din
 Audio In: RCA (x2)
 Audio Out: 3.5mm Mini Jack
 PC Audio In: 3.5mm Mini Jack
 DC Power In: 4-Pin
 Touch Screen: USB Type A or Serial DB9

ON SCREEN DISPLAY

Contrast, Brightness, Autosetting, Clock / Phase, Horizontal & Vertical Position / Expansion / OSD, Text & Graph Mode Selection, Color Temp, Recall, Audio Function, PIP Source

REGULATIONS

UL, CSA, CE/ENC, DHHS, NORDICS, TUV/GS, 1S09241-3, FCC-B, MPR II, TCO 95

POWER CONSUMPTION

Normal: 60W (front LED Green)
 DPM Stand-by/Suspend: <5W (front LED Amber)
 DPM Off: <3W (front LED Amber)
 Power Key Off: <3W (front LED Off)
 Power Switch Off: <1W (front LED Off)
 Power Input: 100-240VAC, 50/60Hz (400Hz) 1.2A
 Power Cord: Wall-outlet type or PC-outlet type

ENVIRONMENTAL

Operating conditions:
 Temperature: 0 to 50 deg C
 Humidity: 10% to 90% non-Condensing
 Altitude: 12,000 feet

Storage conditions:

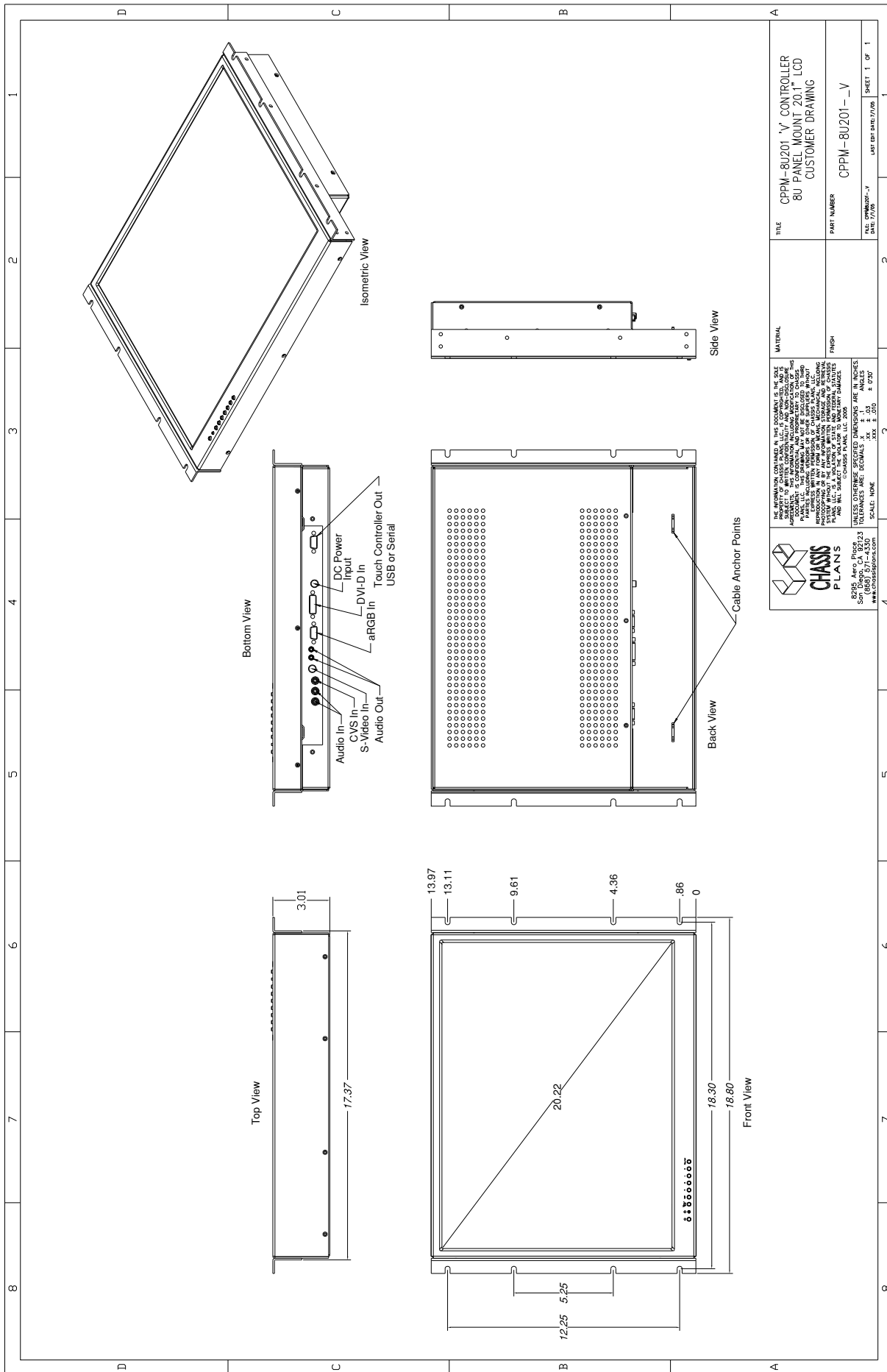
Temperature: -25 to 60 deg C
 Humidity: 5% to 95% non-Condensing
 Altitude: 40,000 feet

SHIPPING WEIGHT

20lbs
 Shipping Box - 24" x 7" x 21"

ORDERING GUIDE

Ordering Code	Description
CPPM8U201-1V	Capacitive Touch Screen, Serial Output
CPPM8U201-2V	Capacitive Touch Screen, USB Output
CPPM8U201-3V	Resistive Touch Screen, Serial Output
CPPM8U201-4V	Resistive Touch Screen, USB Output
CPPM8U201-14V	No Touch Screen



<p>THE INFORMATION CONTAINED IN THIS DOCUMENT IS THE SOLE PROPERTY OF CHASSIS PLANS. IT IS TO BE USED ONLY FOR THE PROJECT AND FOR THE SPECIFIC CHASSIS PLAN NUMBER IDENTIFIED HEREIN. IT IS NOT TO BE REPRODUCED, COPIED, OR TRANSMITTED IN ANY FORM OR BY ANY MEANS, ELECTRONIC OR MECHANICAL, INCLUDING PHOTOCOPYING, RECORDING, OR BY ANY INFORMATION STORAGE AND RETRIEVAL SYSTEM, WITHOUT THE EXPRESS WRITTEN PERMISSION OF CHASSIS PLANS. ALL RIGHTS ARE RESERVED. © CHASSIS PLANS, LLC 2009.</p>	MATERIAL	CPPM-8U201-V CONTROLLER 8U PANEL MOUNT 20.1" LCD CUSTOMER DRAWING	TITLE
	FINISH	CPPM-8U201-V	PART NUMBER
DATE: 07/2009	DATE: 04/17/2009	LAST MOD: 04/17/2009	SHEET 1 OF 1



 CHASSIS PLANS

 8085 S. Orange Ave., Suite 100, Orange, CA 92668

 (949) 571-4330

 www.chassisplans.com