

CPR-27201

20.1" Rack Mount 1600x1200

RUGGED ENTERPRISE CLASS



SYSTEMS ENGINEERED TO PERFORM™

The CPR-27201 is the first high performance rack mount 1U 20.1" TFT LCD display with 1600 x 1200 resolution. The display offers 250nit brightness, 500:1 contrast, and 89 degree viewing angle for exceptional viewability. An anti-glare hard coating minimizes reflections making images much more clear. The aspect ratio is 4:3 with a Pixel Pitch of only 0.255mm. It will display 16.7 million colors (True Color).

With only 27" of depth, the CPR-27201 is perfect for rack or transit case installations. It can be used in Industrial, Commercial, Military, or Broadcast applications. Its lightweight but rugged aluminum construction makes it perfect for mobile installations. It is designed and manufactured in the US.

The CPR-27201 provides multiple signal input options including aRGB, DVI-D, NTSC, Pal S-Video and Composite Video.

As with all Chassis Plans products, a wide variety of custom options are available.

ENCLOSURE

- 20.1" UXGA 1600 x 1200 TFT LCD
- 1U (1.71") x 27" deep
- Rugged all aluminum construction
- Designed to Satisfy Military, Industrial and Commercial Requirements
- Compact Enclosure for Limited Depth Installation

DISPLAY

- Largest LCD Panel that can fit within the standard rack constraints in 1U.
- 20.1" Diagonal Active Matrix UXGA TFT LCD
- Features LG Technology
- 1600 x 1200 @ 60Hz Native Resolution

VIDEO CONTROLLER

- Standard aRGB, DVI-D, S-Video and Composite Video Inputs
- OSD (On Screen Display) for Monitor Setup and Control
- Picture-in-Picture
- Audio Input and Output with Built-In Amplifier (Speakers Not Included)

KEYBOARD

- Several options including Cherry, Sun or NEMA 4; trackball, touchpad, or integrated pressure sensitive pointing device

OPTIONAL FEATURES / OPTIONS

- Transflective LCD for Daylight Use
- Enhanced Backlighting
- Protective Glare Filters
- Customer Specified Paint Color
- Customer Logo



The Original Industrial Computer Source®

Chassis Plans · 8295 Aero Place · San Diego · CA · 92123
Phone (858) 571-4330 · Fax (858) 571-6146
saleseng@chassisplans.com
www.chassisplans.com
© 2007 Chassis Plans
10/7/08

ENCLOSURE

1U x 19" (wide) x 27" (deep)
 Fits 27"-36" Rack
 Weight: 27.0lbs
 Color: Powder coated black, light texture
 (Custom colors and logos available)

DISPLAY

LG.Phillips LM201U04 20.1" TFT LCD w/ anti-glare hard coating
 Display area: 408mm x 306mm
 Display Colors: 16.7 Million
 Response Time (Tf / Tr): 9/7mS
 Viewing Angle: 89/89/89/89 deg
 Contrast Ratio: 400:1 typical
 Brightness: 250cd/m2 typical
 Pixel Pitch: 0.255mm x 0.255mm
 Power Management: EPA Energy Star, VESA DPMS

DISPLAY RESOLUTION

Max Resolution:
 D-Sub: Analog UXGA 1600 x 1200 @ 75Hz
 DVI: UXGA 1600 x 1200 @ 60Hz
 Recommended Resolution: DVI UXGA 1600 x 1200 @ 60Hz
 19 Display Modes VGA to UXGA
 Horizontal Frequency: 15-80KHz Automatic
 Vertical Frequency: 60-75Hz Automatic

ON SCREEN DISPLAY

Contrast, Brightness, Autosetting, Clock / Phase, Horizontal & Vertical Position / Expansion / OSD, Text & Graph Mode Selection, Color Temp, Recall, Audio Function, PIP Source

KEYBOARDS

A variety of keyboards can be installed offering trackball or touchpad mouse functions. A Sun Microsystems Type 5 Compatible keyboard provides all Sun function keys. A NEMA-4 keyboard with integrated pressure sensitive pointing device can be used in wet environments where chemicals or liquids may be spilled on it.

SIGNAL INTERFACE / KVM

Several backs are offered for signal interface connections. Standard backs provide connectors for VGA, DVI, S-Video and Composite Video inputs. Four, eight and sixteen port KVM backs allow this one keyboard/display to connect to and control multiple computers. An ultra-high end back targeted at the broadcast industry provides HD-SDI video input.

CONNECTORS:

aRGB:	15-pin high density DB15
DVI:	DVI-D 23-pin female
Composite:	RCA Plug
S-Video In:	4-Pin Mini Din
Audio In:	RCA (x2)
Audio Out:	3.5mm Stereo Mini Jack Female
PC Audio In:	3.5mm Stereo Mini Jack Male
Keyboard:	PS/2 or Optional USB
Mouse:	PS/2 or Optional USB
DC Power In:	2-Pin 2x5.5 Power Plug

POWER CONSUMPTION

Normal: 60W (front LED Green)
 DPM Stand-by/Suspend: <5W (front LED Amber)
 DPM Off: <3W (front LED Amber)
 Power Switch Off: <1W (front LED Off)
 Power Input: 100-240VAC, 50/60Hz 1.2A

ENVIRONMENTAL

Operating conditions:

Temperature:	0 to 50 deg C
Humidity:	20% to 95% non-condensing
Altitude:	10,000 feet

Storage conditions:

Temperature:	-10 to 60 deg C
Humidity:	5% to 95% non-condensing
Altitude:	24,000 feet

REGULATIONS

FCC-A, CE; Optional UL, CSA, TUV

SHIPPING

Weight: 36lbs
 Shipping Box - 23" x 6" x 33"





Option Code 1 - Cherry 83 key keyboard with 16mm trackball and 2-button pointing device. Featuring mechanical keys with gold crosspoint contacts for high-precision key action, key life expectancy approximately 20 million cycles and a MTBF of 134,000 hours. Multiple language support is available. Offered with PS/2 or optional USB interface.



Option Code 5 - NEMA 4 keyboard with integrated Pressure Sensitive Pointing Device from Staco Switch. This keyboard was designed for rugged duty applications where clean environments must be maintained. Features a wipeable surface allowing for easy removal of dirt, chemicals and foreign matter. All keys are evenly back-light. Offered with PS/2 or optional USB interface.



Option Code 6 - Sun Microsystems Type 5 compatible with 3-button 25mm trackball. USB and Serial variants to support Sun legacy and new systems. Key life expectancy approximately 50 million cycles and a MTBF of 55,000 hours. USB interface and Serial Variants to support new and legacy Sun Systems.



Option Code 8 - Sealed industrial 113 Key Keyboard with integrated Hula Point pointing device with 20 Function Keys, a 10-Key Number pad and is made of industrial silicone rubber. PS/2 or optional USB interface (8U).



Option Code 9 - 88 key keyboard with high quality integrated 3-button touchpad. Rubber membrane key contacts for high-precision key action. Multiple language support available. PS/2 or optional USB (9U).



Option Code 10 - 88 key keyboard with 2-button optical 16mm trackball. Rubber membrane key contacts for high-precision key action. Multiple language support available. PS/2 or optional USB (10U).

- B** High End 8 port KVM unit with High Density connector containing aRGB Video, Mouse and Keyboard signals. With this unit you can connect the Console Drawer to 8 CPU's directly. You can also Cascade up to 504 CPU's using the dedicated cascading port. (You can daisy chain up to 31 stand alone 16 port KVMS-16A to this console.)



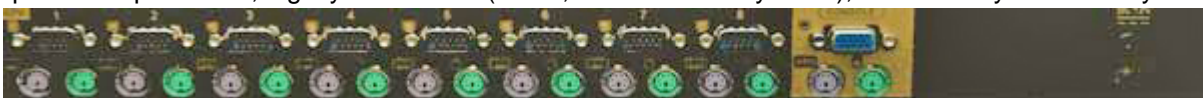
- C** Provides an integrated KVMS-16A giving you all of the features of the "B" BACK (integrated KVMS-08A) Plus 8 more ports! This brings the total up to 16 CPU ports controlled directly and up to 512 total, when you cascade up to 31 stand alone KVMS-16A switches.



- D** aRGB VGA, DVI-D



- E** Lower Cost Integrated 8 port KVM (KVMS-8800A) Switch. Includes an OSD menu for up to 4 users, password protection, legacy connection (DB15, PS/2Mouse/Keyboard), and Hot Key functionality.



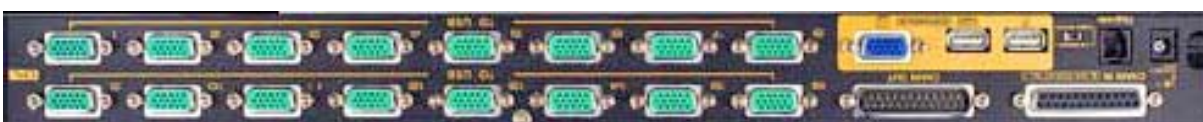
- G** First generation DVI-D Media switch BACK, gives complete control over 4 CPU's DVI-D Video, USB keyboard/mouse, speaker, microphone, and 2 USB devices (Printers, Scanners, Etc.) with Hot Key support.



- I** KVMS-08U. Control 8 Pure USB computers with one USB K/B, one USB mouse, and one VGA monitor. Can Daisy Chain to Control up to 512 PC's. Supports multimedia USB keyboards (PC, Mac and Sun). OSD is mouse driven for quick and convenient navigation of the menu. Security - administrator / user password authorization for enhanced security protection (PSP).



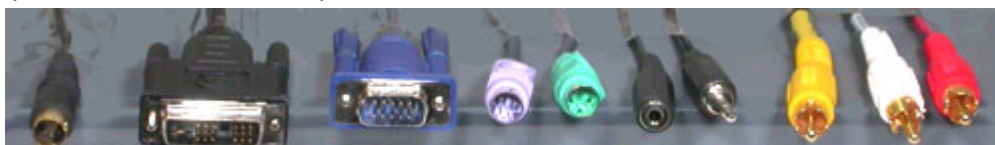
- J** KVMS-16U. Control 16 Pure USB computers with one USB K/B, one USB mouse, and one VGA monitor. Can Daisy Chain to Control up to 512 PC. Supports multimedia USB keyboards (PC, Mac and Sun). OSD is mouse driven for quick and convenient navigation of the menu. Security - administrator / user password authorization for enhanced security protection (PSP).

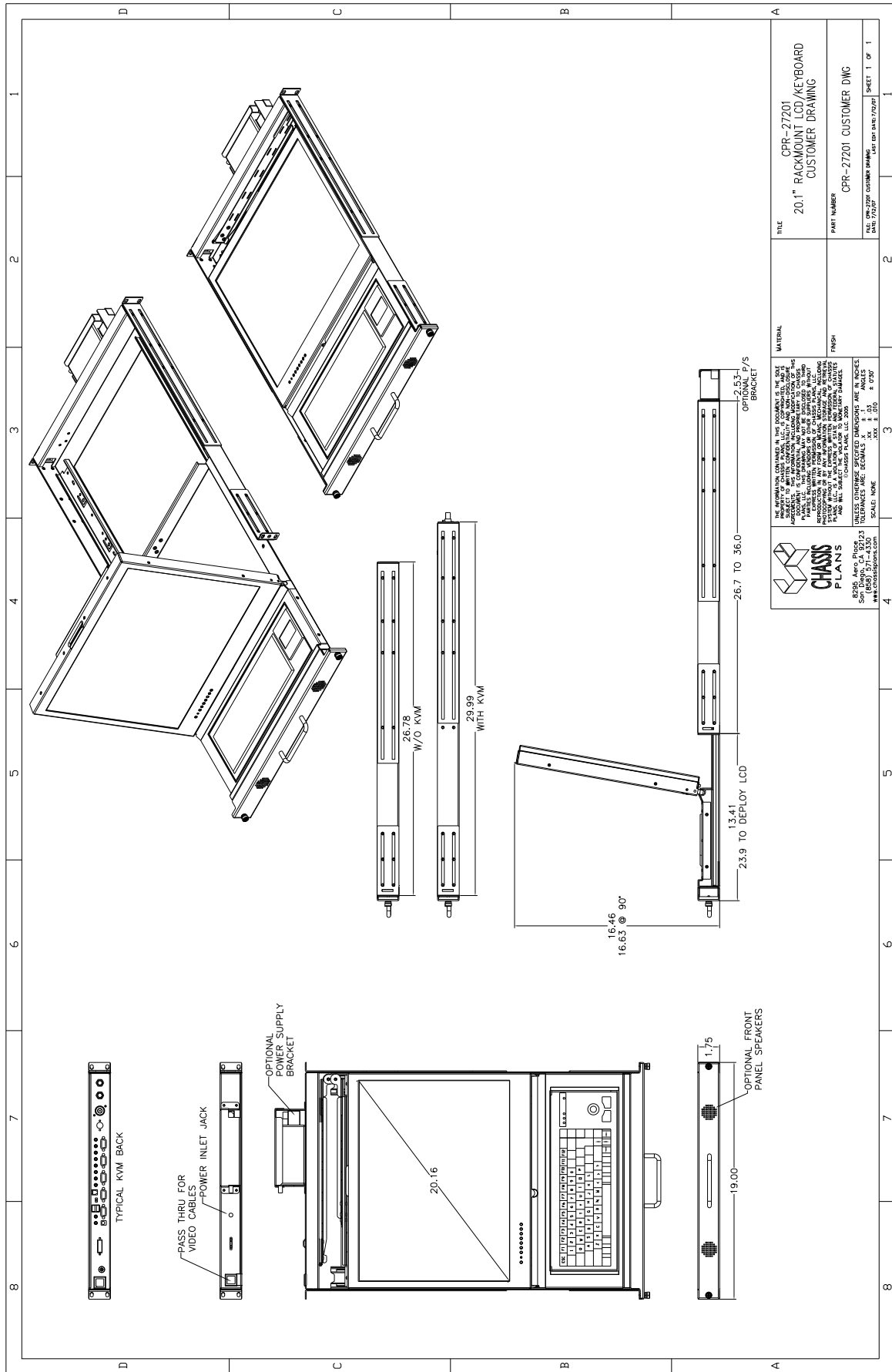


- S** HD/SD-SDI Back: High Definition/ Standard Definition – Serial Digital Interface. Will give you all the SDI video formats including NTSC, PAL, 720p, 1080p and 1080i. On screen Display along with remote will help you navigate between the Input Formats. Optional 4:4:4 12 bit Input via dual-link HD-SDI. INPUT: SDI - SMPTE 259M-C (270Mb/s), HD-SDI - SMPTE 292M (1.485, 1.485/1.001 Gb/s) DVI-D (via DVI-I connector), Analog RGB (via DVI-I connector) Dual-Link HD-SDI 4:4:4 SMPTE 372M.



- V** aRGB, DVI-D, S Video and Composite Video with BNC Post, and PS/ 2 or USB keyboard / mouse. Front panel or OSD control of input source. Connectors are attached to ends of cables.





<p>CHASSIS PLANS 8295 Aero, Pico, 23 Series (888) 971-4330 www.chassisplans.com</p>		<p>UNLESS OTHERWISE SPECIFIED DIMENSIONS ARE IN INCHES TOLERANCES ARE DECIMALS INCHES .XX ± .03 ANGLES SCALE: NONE .XXX ± .015</p>	
<p>MATERIAL ALL METAL COMPONENTS SHALL BE DRAWN TO THE MATERIALS AND FINISHES LISTED IN THE DRAWING. ALL DIMENSIONS SHALL BE TO THE CENTERLINE UNLESS OTHERWISE SPECIFIED. ALL DIMENSIONS SHALL BE TO THE CENTERLINE UNLESS OTHERWISE SPECIFIED. ALL DIMENSIONS SHALL BE TO THE CENTERLINE UNLESS OTHERWISE SPECIFIED. ALL DIMENSIONS SHALL BE TO THE CENTERLINE UNLESS OTHERWISE SPECIFIED.</p>		<p>TITLE CPR-27201 20.1" RACKMOUNT LCD/KEYBOARD CUSTOMER DRAWING</p>	
<p>FINISH UNLESS OTHERWISE SPECIFIED DIMENSIONS ARE IN INCHES TOLERANCES ARE DECIMALS INCHES .XX ± .03 ANGLES SCALE: NONE .XXX ± .015</p>		<p>PART NUMBER CPR-27201 CUSTOMER DWG</p>	
<p>DATE: 09-27-2009 CUSTOMER DRAWING DATE: 09-27-2009</p>		<p>DATE: 09-27-2009 SHEET 1 OF 1</p>	