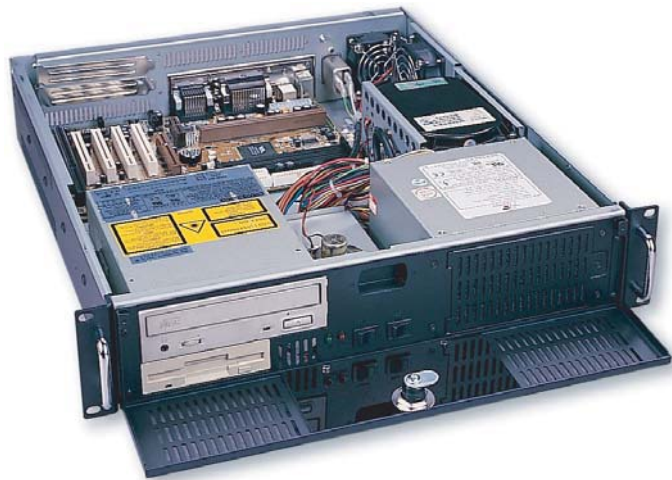


CHASSIS PLANS

E2CHASSIS



Advantages

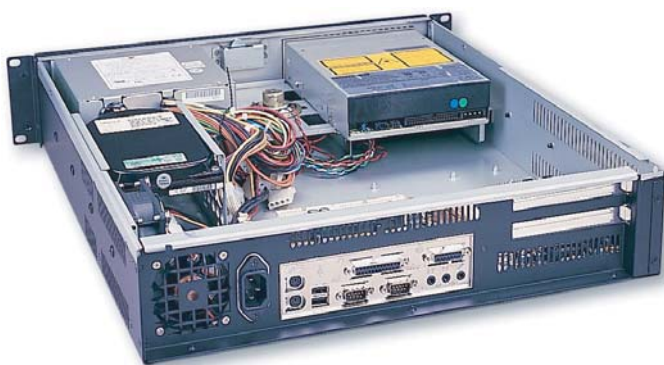
- Compact 2U x 19.7-inch (501mm) design
- Front door provides drive security
- 300W- 460W PS/2 front mount power supply
- Five drive bays with one 5.25-inch and one 3.5-inch external drive bays and three internal 3.5-inch drive bays
- Removable rack ears for benchtop applications
- One 42.5CFM fan and one 23.5CFM fan are mounted internally to protect internal components and feature cards

Support

- Superior pre-sales and post-sales technical support
- All products carry a two year limited warranty

Customization

- Custom paint and logo services available



E2 CHASSIS

The E2 Series chassis is a medium performance design in a low cost 2U rackmount enclosure. Feature rich, the E2 Series is a solid, robust design which will meet the most rigorous and demanding requirements. This chassis is ideal for high density I/O intensive applications.

The enclosure is constructed of 18 gauge steel, clear zinc plated for corrosion protection and an attractive appearance. The front panel is attractively detailed and is of heavier gauge than the chassis.

The E2 provides for one externally accessible 5-1/4 inch and one 3-1/2 inch drive bays. In addition, three 3-1/2 inch drives can be installed internally.

The chassis is cooled by one 80mm 42.5CFM and one 60mm 23.5CFM ball bearing fans. Air flow is in through a front mounted air filter and the chassis provides for negative air pressure.

A door covers and protects the drives. Accessible behind the door is the power and reset switches as well as the power-on and drive activity LED's. The LED's are visible through the door when it is closed.

The E2 Chassis provides for mounting a standard ATX motherboard up to 9.6 x 12-inches. Two plug-in cards can be installed using the included riser card. Additionally, several riser card options are available.

SPECIFICATION

Dimensions

19" (wide) x 2U (3.5") (high) x 19.7" (deep)

Drive Capacity

One 5-1/4 inch drive - front accessible

One 3-1/2 inch drive - front accessible

Three 3-1/2 inch drives -internal

Front Panel Controls

Power switch - Black momentary pushbutton with 2 position .100 header for board connection

Reset switch - Black momentary pushbutton with 2 position .100 header for board connection

Power LED - green with 3 position .100 header for board connection

Drive Activity - Red with 2 position .100 header for board connection

Switch and LED connectors are labeled at the connector end

Rear Panel Details

2 Plug-in card slots

ATX I/O Shield

Cooling

One 80mm 42CFM fan and one 60mm 23.5CFM fan

Negative chassis pressure

Optional fan tachometer output

Power Supply

Accepts special PS/2 style supply with remote AC input

Optional 12, 24 or 48VDC supplies available

Motherboard Mounting

Standard 9.6 x 12-inch ATX motherboard

Motherboard adapter plate accommodates any motherboard

Plug-in I/O Cards

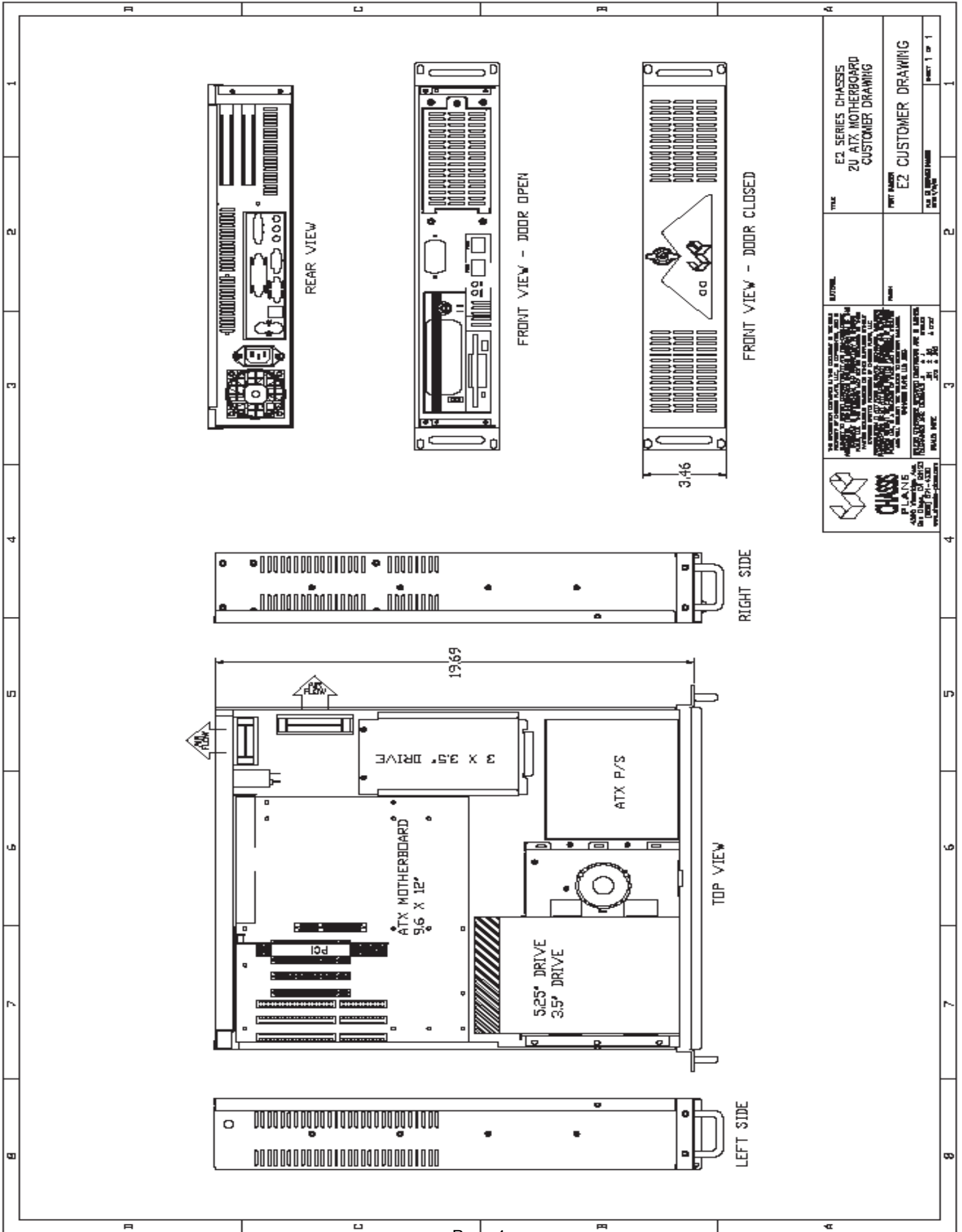
Accommodates two plug-in I/O cards

Cards limited to 9.6-inches logn

Includes 2-slot 32-bit standard 5V PCI riser card



The Original Industrial Computer Source TM



<p>CHASSIS PLANS 4500 VIA VALLEY VIEW DRIVE SAN DIEGO, CA 92123 (619) 441-4330 WWW.CHASSISPLANS.COM</p>	<p>THE INFORMATION CONTAINED IN THIS DRAWING IS THE PROPERTY OF CHASSIS PLANS, LLC. IT IS UNLAWFUL TO REPRODUCE, TRANSMIT, OR DISSEMINATE THIS INFORMATION IN ANY FORM OR BY ANY MEANS, WITHOUT THE WRITTEN PERMISSION OF CHASSIS PLANS, LLC.</p>	<p>TITLE E2 SERIES CHASSIS ZU ATX MOTHERBOARD CUSTOMER DRAWING</p>	<p>DATE 08/20/2018</p>
	<p>REVISIONS</p>	<p>DATE</p>	<p>BY</p>
	<p>DESCRIPTION</p>	<p>DATE</p>	<p>BY</p>
<p>CHASSIS PLANS 4500 VIA VALLEY VIEW DRIVE SAN DIEGO, CA 92123 (619) 441-4330 WWW.CHASSISPLANS.COM</p>		<p>PROJECT NUMBER E2 CUSTOMER DRAWING</p>	<p>DATE OF REVISION 08/20/2018</p>
		<p>REVISION</p>	<p>DATE</p>
		<p>BY</p>	<p>DATE</p>
		<p>DESCRIPTION</p>	<p>DATE</p>