

E31CHASSIS

ROBUST 2U ENCLOSURE

RUGGED ENTERPRISE CLASS

SYSTEMS ENGINEERED TO PERFORM®



The E31Chassis Series chassis is a compact design in a 2U rackmount enclosure. Feature rich, the E31Chassis is a solid, robust chassis which will meet the most rigorous and demanding requirements. This chassis is ideal for space limited installations requiring high density I/O.



FEATURES

- 2U x 13.9-inch design
- One 5.25-inch and one slim CD/DVD drives
- Three 3.5-inch internal drives
- One 80mm 42CFM and two 40mm 7CFM fans
- Seven I/O card slots for low profile cards
- Two front panel USB ports
- Accepts ATX 9.6x12-inch motherboard
- Removable rack ears for bench top applications



SUPPORT

- Superior pre- and post-sales technical support
- All products carry a two year limited warranty

CUSTOMIZATION

- Custom paint and logo available
- Custom chassis features to fit customer requirements
- Several cooling options
- Fully configured turn key systems available

Chassis Plans · 8295 Aero Place · San Diego · CA · 92123
Phone (858) 571-4330 · Fax (858) 571-6146
saleseng@chassisplans.com
www.chassisplans.com
© 2007 Chassis Plans



The Original Industrial Computer Source®

NEXT GENERATION SOLUTION

E31 CHASSIS

The enclosure is constructed of 18 gauge steel, clear zinc plated for corrosion protection and an attractive appearance. The front panel is attractively detailed and is of heavier gauge than the chassis.

The E31 provides for one 5.25 inch and one slim CD/DVD drive externally accessible. Provision is made for installing three 3-1/2" drives internally.

The chassis is cooled by one high velocity 80mm 42CFM ball bearing intake fan and two 40mm 7CFM exhaust fans providing cooling tailored to high performance motherboards.

The power and reset switches, power-on, drive activity and LAN activity LED's are mounted on the front panel with two USB ports.

The E31 Chassis provides for mounting a standard ATX 9.6x12-inch motherboard. The rear panel provides 7 I/O card slots, vertically orientated for low profile cards.

A standard 1U power supply will fit allowing several power options including DC input.

Dimensions (W x H x D)

17 x 1.7 x 13.9-inch

Front Panel Indicators

Power LED
Disk activity LED (Internal Drive)
Three LAN activity LED's

Front Panel Controls/Connections

System reset switch
Power on/off switch
Two USB ports

Drive Capacity

One 5.25-inch front drive bay
One slim CD/DVD front drive bay
Three 3.5-inch internal drive bays

Cooling Fans

One 80mm 42CFM intake fans
Two 40x20mm 7CFM exhaust fans

Motherboard Mount

Accommodates ATX 9.6x12" motherboard

Chassis Rear Detail

Seven vertical low profile card slots
Standard ATX I/O shield
Accepts 1U power supply

Construction

18 gauge cold rolled steel
Clear zinc plated

Power Supply

1U rear chassis mounting
190-200mm depth

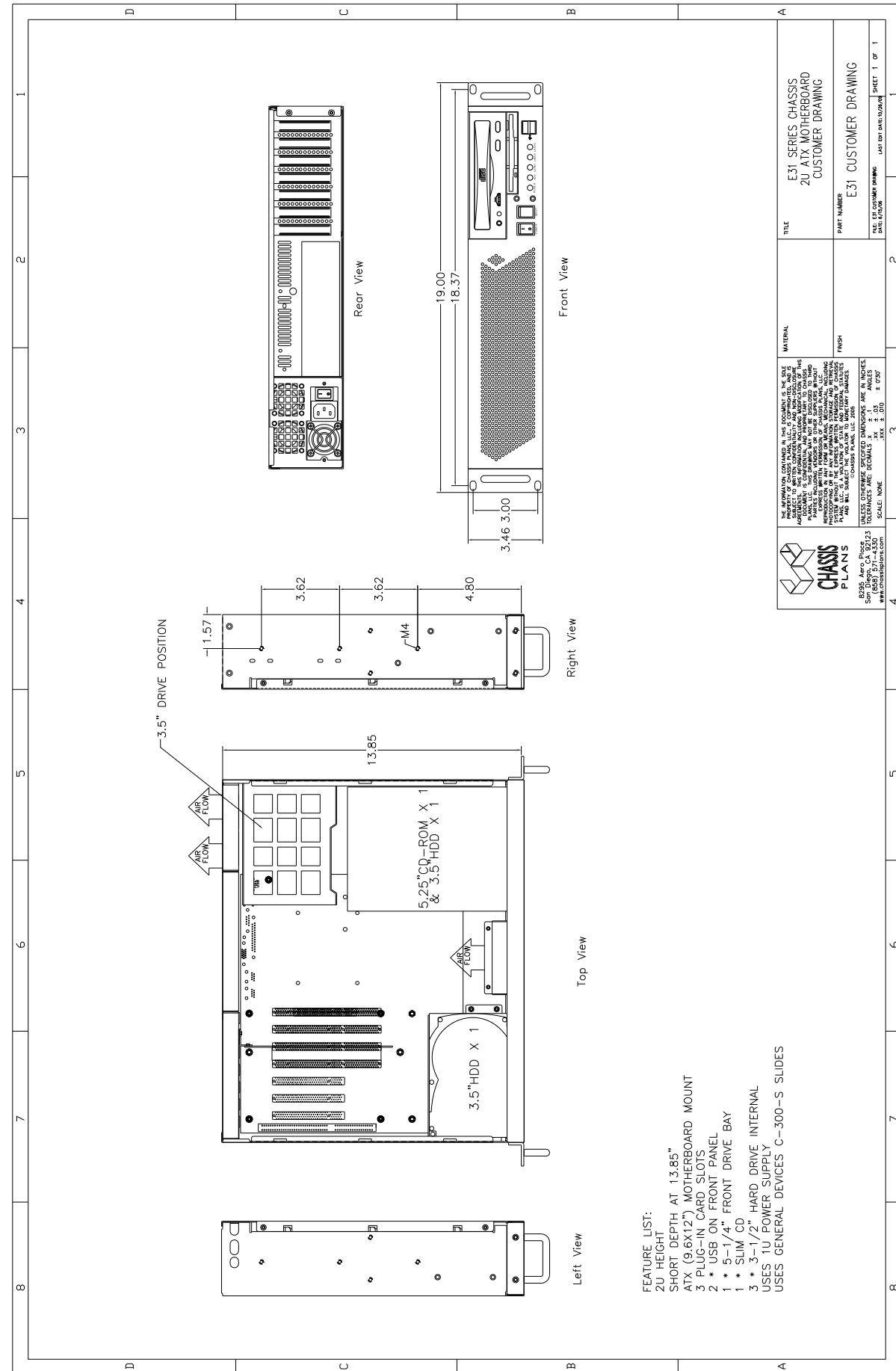
Color

Black
Medium texture

Weight

25 lbs. (13.6kg) representative system





FEATURE LIST:

- 2U HEIGHT
- SHORT DEPTH AT 13.85"
- ATX (9.6X12") MOTHERBOARD MOUNT
- 3 PLUG-IN CARD SLOTS
- 2 * USB ON FRONT PANEL
- 1 * 5-1/4" FRONT DRIVE BAY
- 1 * SLIM/ CD
- 3 * 3-1/2" HARD DRIVE INTERNAL
- USES 1U POWER SUPPLY
- USES GENERAL DEVICES C-300-S SLIDES



8095 Aero Place
 San Diego, CA 92123
 619-444-2222
 www.chassisplans.com

UNLESS OTHERWISE SPECIFIED DIMENSIONS ARE IN INCHES
 TOLERANCES ARE: DECIMALS .X = ± .1 ANGES
 FRACTIONS XXX = ± .005

SCALE NONE

TITLE	E31 SERIES CHASSIS 2U ATX MOTHERBOARD CUSTOMER DRAWING
PART NUMBER	E31 CUSTOMER DRAWING
DATE: 07/26/09	LAST EDIT: 08/10/2009
SHEET 1 OF 1	