

CHASSIS PLANS

E7CHASSIS



Advantages

- Compact 2U x 25.6 inch depth design
- Eight hotswap drives - SATA, IDE, or SCA
- Slim CD/DVD drive bay
- Slim Floppy drive bay
- Two internal 2-1/2" hard drive bays
- Four 80mm fans
- Thermal management card
- EATX motherboard
- Three I/O card slots
- Two USB ports on front panel

Support

- Superior pre-sales and post-sales technical support
- All products carry a two year limited warranty

Customization

- Various power options
- Custom paint and logo available



The Original Industrial Computer Source™

Chassis Plans · 8295 Aero Place · San Diego · CA · 92123
 Phone (858) 571-4330 · Fax (858) 571-6146
 saleseng@chassisplans.com
 www.chassisplans.com
 © 2005 Chassis Plans

E7CHASSIS

The E7 Series chassis is an ultra high performance design in a low cost 2U rackmount enclosure. Feature rich, the E7 Series is a solid, robust design which will meet the most rigorous and demanding requirements. This chassis is ideal for high density I/O and drive intensive applications.

The enclosure is constructed of 18 gauge steel, clear zinc plated for corrosion protection and an attractive appearance. The front panel is attractively detailed and is of heavier gauge than the chassis.

The E7 provides for eight front accessible hot swap 3-1/2" drives. Models for SATA, IDE and SCA drives are available. In addition, two internal 2-1/2" drives can be installed. The front panel provides for one externally accessible slim CD/DVD and one slim floppy drive. The drives can easily be configured for a large RAID. The E7 is ideal for data intensive or mission critical applications.

The chassis is cooled by four 80mm 42CFM ball bearing fans. Air flow is in through a front mounted air filter. The fans are mounted mid-chassis to improve drive cooling. A thermal management card monitors fan operation and chassis temperature providing both an audible alarm and contact closure output.

A door covers and protects the drives. Accessible behind the door are the power and reset switches as well as the power-on and drive activity LED's and USB extension ports. The LED's are visible through the door when it is closed.

The E7 Chassis provides for mounting a standard EATX motherboard up to 12 x 13 inches. Three plug-in cards can be installed using the included riser card. Additionally, several riser card options are available.

Power supply options include redundant and non-redundant and a power supply up to 300mm long will easily fit.

Dimensions

19" (wide) x 2U (3.5") (high) x 25.6" (deep); Weight - 41.8 lbs / 19 kgs

Drive Capacity

Eight 3-1/5" hot swap drive carriers (SATA, IDE or SCA)

One slim CD/DVD- front accessible and One slim Floppy - front accessible

Two 2-1/2" drives - internal

Front Panel Controls

Power switch, Reset switch, Alarm reset switch, Power LED

Fan and Temperature Alarm LED's (2 * Drive Activity, 3 * LAN Activity)

Two port USB extension connector

All controls and LED's located behind front door

Rear Panel Details

3 Plug-in card slots

ATX I/O Shield

Cooling

Four 80mm 42CFM fans mounted mid-chassis to assist with drive cooling

Thermal Management Board

Monitors the following chassis parameters; Audible alarm sounded on system failure;

Rear panel mounted terminal block for NO/NC contact closure for external alarm;

Fan operation

Chassis over-temperature settable for 40, 50, 60 deg C alarm point

Two remote chassis temperature probes

Power supply operation

Power Supply (not included)

Rear Mount 2U style

AC Supply - Zippy P2U or P2G form factor

DC Supply - Zippy D2U form factor, 48VDC only available

Redundant - Zippy xxxxxx (Requires E7CHASSIS-R option)

Motherboard Mounting

Standard EATX 12 x 13 inch motherboard

Motherboard adapter plate accommodates any motherboard

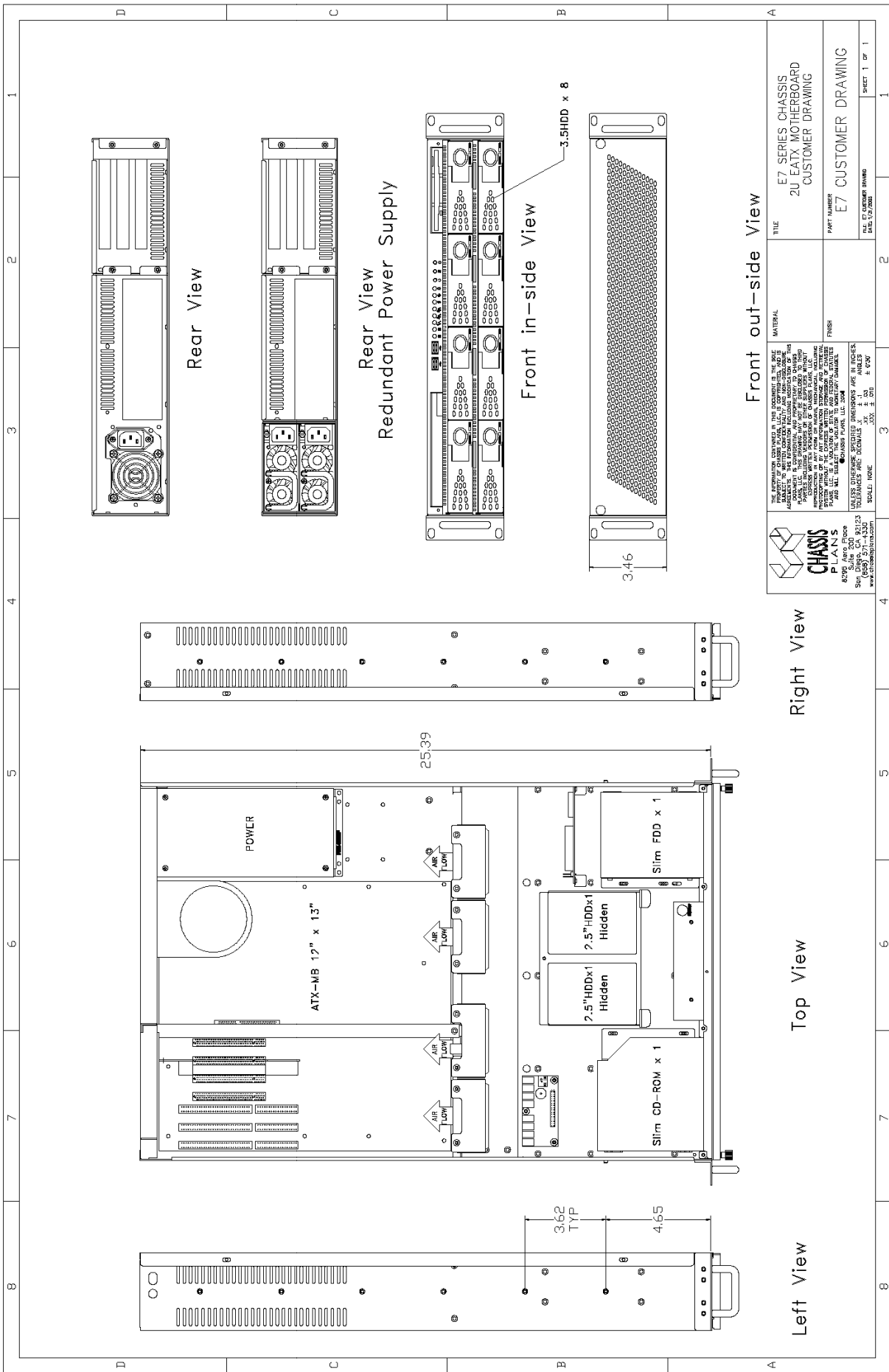
Custom rear panels available for non-standard motherboards

Plug-in I/O Cards

Accommodates three plug-in I/O cards

Full length cards supported

Includes 3-slot 32-bit standard 5V PCI riser card



Front out-side View

Right View

Top View

Left View


CHASSIS PLANS
 8275 S. Jule 200 West
 Suite 200, CA 92503
 (951) 271-3337
 www.chassisplans.com

THE INFORMATION CONTAINED IN THIS DOCUMENT IS THE SOLE PROPERTY OF CHASSIS PLANS, LLC. IT IS CONFIDENTIAL AND NOT BE LOANED, REPRODUCED, COPIED, REPRODUCED, OR DISCLOSED IN ANY MANNER WITHOUT THE WRITTEN PERMISSION OF CHASSIS PLANS, LLC. CHASSIS PLANS, LLC IS NOT RESPONSIBLE FOR ANY DAMAGE, LOSS, OR INJURY RESULTING FROM THE USE OF THIS INFORMATION. CHASSIS PLANS, LLC IS NOT RESPONSIBLE FOR ANY DAMAGE, LOSS, OR INJURY RESULTING FROM THE USE OF THIS INFORMATION. CHASSIS PLANS, LLC IS NOT RESPONSIBLE FOR ANY DAMAGE, LOSS, OR INJURY RESULTING FROM THE USE OF THIS INFORMATION.

TITLE	E7 SERIES CHASSIS 2U EATX MOTHERBOARD CUSTOMER DRAWING
MATERIAL	
FINISH	
PART NUMBER	E7 CUSTOMER DRAWING
FILE #	E7 CUSTOMER DRAWING
DATE	10/2/2008
SHEET	1 OF 1