

CHASSIS PLANS

F10CHASSIS



Advantages

- Compact 1U x 8.66 inch depth design
- Slim CD/DVD drive bay
- Slim Floppy drive bay
- Internal 3-1/2" or 2-1/2" Hard Drive
- ITX motherboard
- One I/O card slot
- Two USB ports on front panel

Support

- Superior pre-sales and post-sales technical support
- All products carry a two year limited warranty

Customization

- Various power options
- Custom paint and logo available



The Original Industrial Computer Source™

Chassis Plans · 8295 Aero Place · San Diego · CA · 92123
 Phone (858) 571-4330 · Fax (858) 571-6146
 saleseng@chassisplans.com
 www.chassisplans.com
 © 2005 Chassis Plans

F10CHASSIS

The F10 Series chassis is an ultra compact design in a low cost 1U rackmount enclosure. Feature rich, the F10 Series is a solid, robust design which will meet the most rigorous and demanding requirements. This chassis is ideal for space limited applications.

The enclosure is constructed of 18 gauge steel, clear zinc plated for corrosion protection and an attractive appearance. The front panel is attractively detailed and is of heavier gauge than the chassis.

The F10 provides for two drive configurations. A slim CD/DVD and one 3-1/2" hard drive can be installed. Alternatively, a slim CD/DVD, slip floppy and one 2-1/2" hard drive can be configured. Booting from the LAN is an option if the motherboard supports it. The F10 makes an ideal enclosure for a network appliance.

The chassis is cooled by the fan in the power supply. No other fans are provided. This makes for almost silent operation.

The F10 Chassis provides for mounting a standard ITX (mini-ITX) motherboard. The Mini-ITX mainboard form factor is a highly integrated native x86 mainboard measuring only 170mm x 170mm and enables the development of an infinite variety of small form factor PC systems. More than 33% smaller than the FlexATX mainboard form factor, the Mini-ITX is aimed at the development of Thin-Clients, wireless network devices, digital media systems, set-top boxes and more. One plug-in card can be installed using an optional riser card.

Power supply options include a 150 to 200W FSP family (Matrix Power) supply up to 150mm long. DC power input is an available option.

1U CHASSIS



SPECIFICATION

Dimensions

19" (wide) x 1U (1.75") (high) x 8.66" (deep)
Weight - 10.6 lbs / 4.8 kgs

Drive Capacity

One slim CD/DVD / one 3-1/2" Hard Drive
One slim CD/DVD / one slim Floppy / one 2-1/2" Hard Drive

Front Panel Controls

Power switch
Reset switch
Power LED
Hard drive activity LED

Rear Panel Details

1 Plug-in card slot
ATX I/O Shield (non-standard form factor, contact factory for available options)

Cooling

Provided by power supply fan

Power Supply

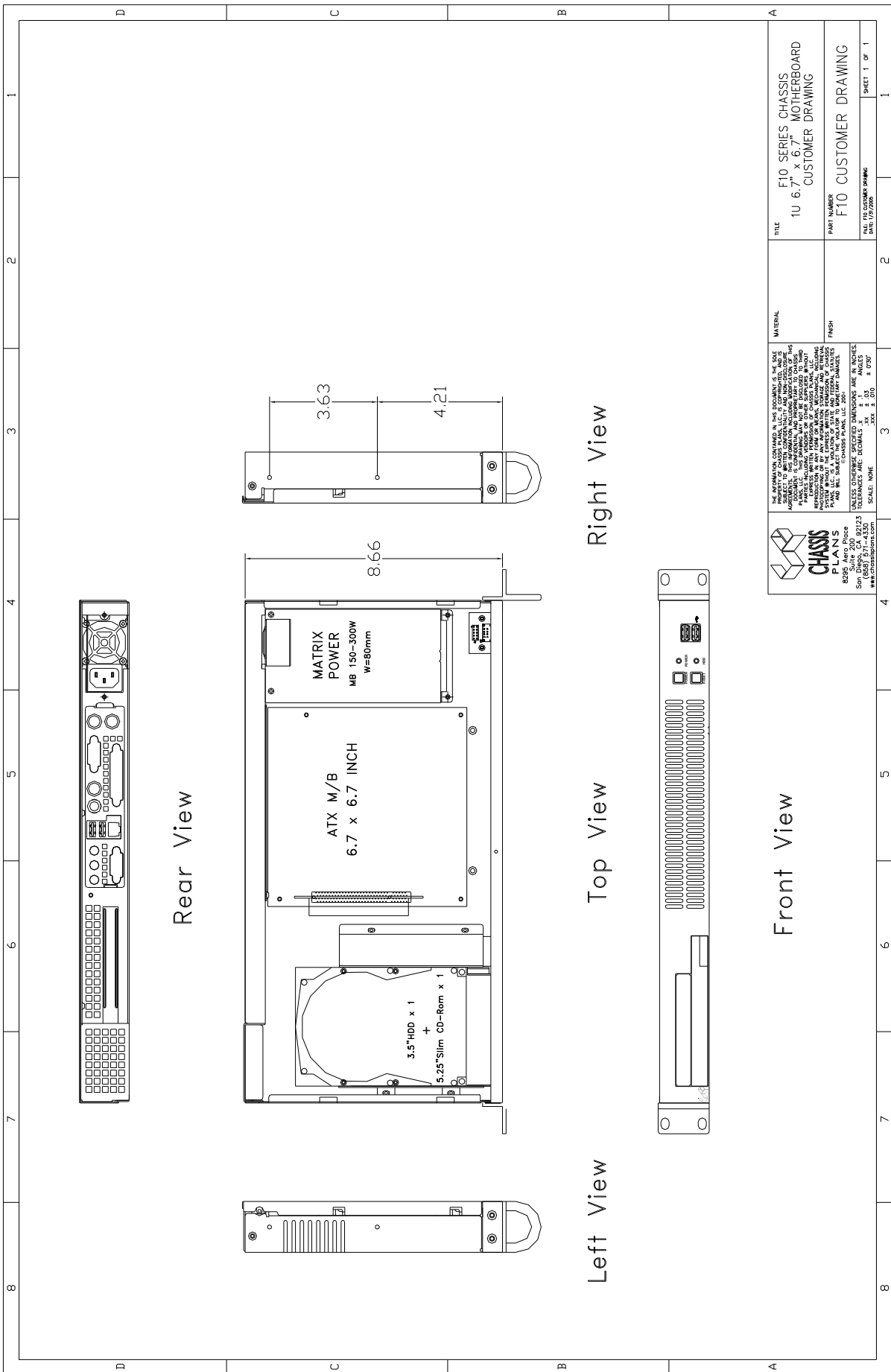
Rear Mount 1U style x 150MM
150W PFC - FSP150-50PL1
180W PFC - FSP180-50PLA
200W PFC - FSP200-50PLA
Power supply not included

Motherboard Mounting

Standard ITX (170mm x 170mm) motherboard (Mini-ITX)

Plug-in I/O Cards

Accommodates one plug-in I/O card
Short cards supported
Riser card not provided



<p>THE INFORMATION CONTAINED IN THIS DOCUMENT IS THE SOLE PROPERTY OF CHASSIS PLANS, INC. AND IS UNCLASSIFIED EXCEPT WHERE SHOWN OTHERWISE. IT IS UNCLASSIFIED EXCEPT WHERE SHOWN OTHERWISE. IT IS UNCLASSIFIED EXCEPT WHERE SHOWN OTHERWISE. IT IS UNCLASSIFIED EXCEPT WHERE SHOWN OTHERWISE.</p>		<p>TITLE F10 SERIES CHASSIS 1U 6.7" x 6.7" MOTHERBOARD CUSTOMER DRAWING</p>	
<p>MATERIAL FINISH</p>		<p>PART NUMBER F10 CUSTOMER DRAWING</p>	
<p>8836 Aero Bruce San Diego, CA 92123 www.chassisplans.com</p>		<p>DATE: 10/22/2009 REV: 1/1/2009</p>	

