

CHASSIS PLANS



F6000 CHASSIS



Advantages

- Compact 1U x 17.7-inch (450mm) design
- 150W- 460W ATX power supply (1U form factor)
- One 5.25 inch drive, one 3.5 inch drive and one internal 3.5 inch hard drive or one slim FDD and one slim CD/DVD front accessible drives plus three 3.5 inch internal drives
- Three 7.0CFM fans
- 3-Slot passive backplane
- Two I/O cards

Support

- Fully integrated solutions available
- Superior pre-sales and post-sales technical support
- All products carry a two year limited warranty

Customization

- Various power options
- Custom paint and logo services available
- Custom chassis features to customer specification
- Fans can be replaced with higher or lower CFM



The Original Industrial Computer Source®

Chassis Plans · 8295 Aero Place · San Diego · CA · 92123
 Phone (858) 571-4330 · Fax (858) 571-6146
 saleseng@chassisplans.com
 www.chassisplans.com
 © 2006 Chassis Plans

F6000CHASSIS

The F6000 Series chassis is a high performance design in a low cost 1U rack-mount enclosure. Feature rich, the F6000 Series is a solid, robust design which will meet the most rigorous and demanding requirements. This chassis is ideal for high density server applications including collocation.

The enclosure is constructed of 18 gauge steel, clear zinc plated for corrosion protection and an attractive appearance. The front panel is attractively detailed and is of heavier gauge than the chassis.

There is more than ample drive storage. Two drive configurations are possible. One configuration allows one external 5.25 inch drive, one 3.5 inch drive and one internal 3.5 inch hard drive.

The other configuration allows for one external slim FDD, one slim CD/DVD plus three internal 3.5 inch hard drives.

A door covers and protects the drives. Accessible behind the door is the power and reset switches as well as the power-on and drive activity LED's. The LED's are visible through the door when it is closed. A dual USB port and PS/2 keyboard port are also provided behind the front door.

Cooling is provided by three 7CFMfans.

The F6 Chassis provides a 3-slot passive backplane for use with a single board computer.

1 U CHASSIS



SPECIFICATION

Dimensions

19" (wide) x 1U (1.7") (high) x 17.7(deep)
Weight - 26 lbs / 12 kgs

Drive Capacity

One 5-1/4" and one 3-1/2" drive (external) plus one internal 3-1/2" hard drive

- or -

One slim FDD, one slim CD/DVD plus 3 internal 3-1/2" hard drives

Front Panel Controls

Power switch - Black momentary rocker switch w/ green LED

Reset switch - Black momentary rocker switch

Power LED - Green LED (in power switch)

Drive Activity - Red LED

Dual USB ports

PS/2 Keyboard Port

Switch and LED connectors are labeled at the connector end.

Rear Panel Details

1 Plug-in SBC slot

2 Plug-in card slots

DB9 and DB25 connector cutouts

Cooling

Three 40x20mm 7.0CFM cooling fans

Power Supply

Not included. Accepts 1U supply. Rear mounted.

Optional 12, 24 or 48VDC supplies available

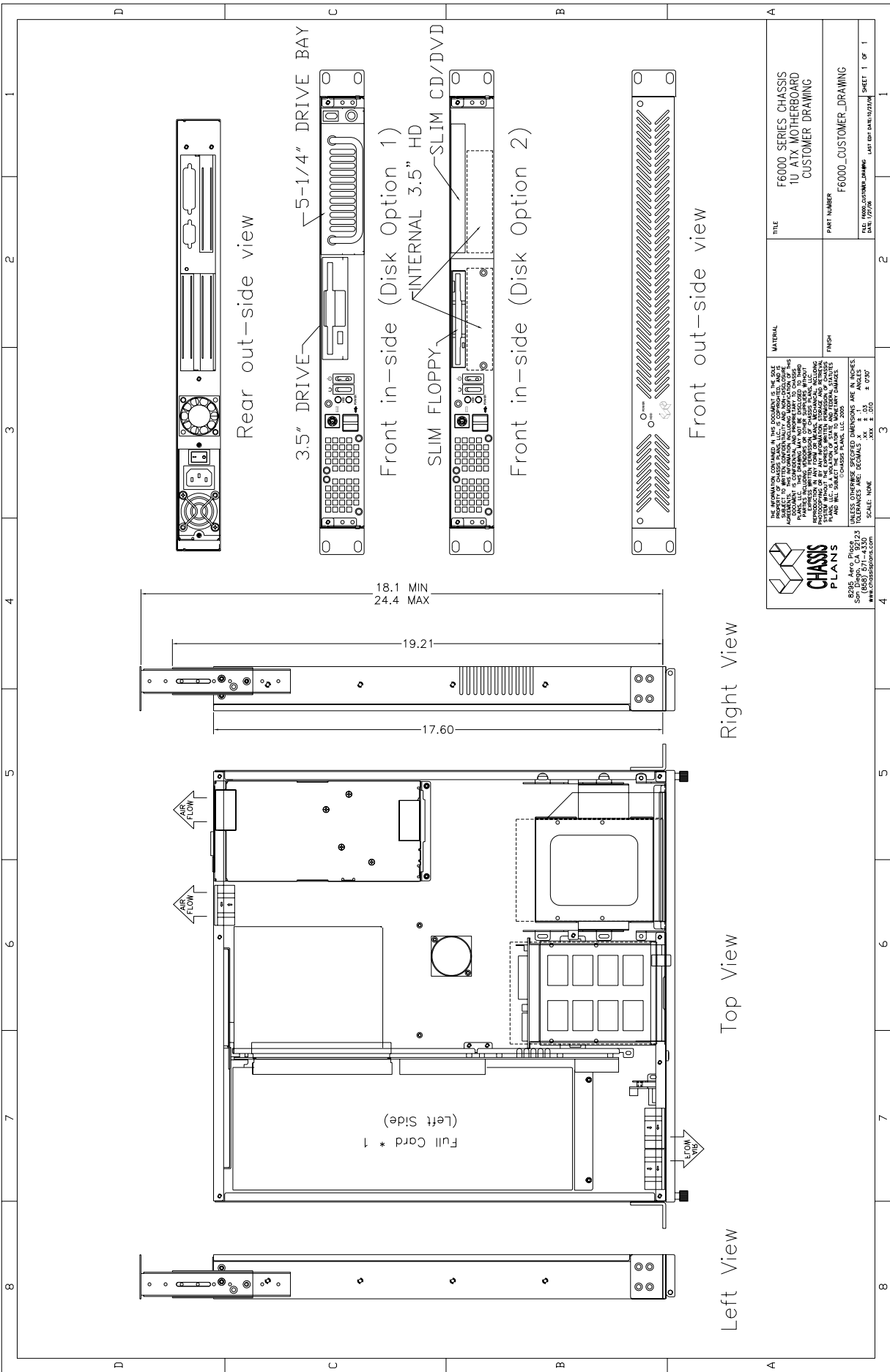
Passive Backplane Mounting

Includes a 3-Slot Passive Backplane

Plug-in I/O Cards

Accommodates one plug-in SBC card

Accommodates two plug-in I/O cards



<p>THE INFORMATION CONTAINED IN THIS DOCUMENT IS THE SOLE PROPERTY OF CHASSIS PLANS. IT IS UNCLASSIFIED AND UNCONTROLLED UNLESS INDICATED OTHERWISE. CHASSIS PLANS IS NOT RESPONSIBLE FOR THE ACCURACY, COMPLETENESS, OR QUALITY OF THE INFORMATION CONTAINED HEREIN. CHASSIS PLANS IS NOT RESPONSIBLE FOR ANY DAMAGE TO PERSONAL PROPERTY, INCLUDING BUT NOT LIMITED TO, DAMAGE TO PERSONAL DATA, ARISING FROM THE USE OF THIS INFORMATION, INCLUDING BUT NOT LIMITED TO, DAMAGE TO PERSONAL DATA, ARISING FROM THE USE OF THIS INFORMATION, INCLUDING BUT NOT LIMITED TO, DAMAGE TO PERSONAL DATA, ARISING FROM THE USE OF THIS INFORMATION.</p>	
TITLE	F6000 SERIES CHASSIS 1U ATX MOTHERBOARD CUSTOMER DRAWING
MATERIAL	
FINISH	
PART NUMBER	F6000_CUSTOM_DRAWING
FILE	F6000_CUSTOM_DRAWING.dwg
DATE	08/12/2014
SHEET	1 OF 1

