

IMC-T121XGA

Industrial Mining Computer

RUGGED INDUSTRIAL CLASS

SYSTEMS ENGINEERED TO PERFORM®



The IMC-T121XGA Industrial Mining Computer is designed to meet the needs of Mission Critical Applications, providing configurations that are truly Fit-for-Use in a variety of operating environments and with a wide range of options to serve the most demanding requirements.

Features

- ◆ Fanless Water-Proof Touch Panel Computer
- ◆ 12.1-Inch XGA (1024x768) TFT LCD
- ◆ Intel Atom N270 1.6GHz Processor
- ◆ Low Power Consumption—60W
- ◆ Dual Gigabit Ethernet
- ◆ Serial and USB 2.0 Ports
- ◆ 1 Mini PCI and 1 Compact Flash Slots
- ◆ Optional 2-1/2" Hard Drive
- ◆ Full IP-65 Compliant for Adverse Environments

Support

- ◆ Superior Pre- and Post-sales Technical Support
- ◆ All Products Carry a One Year Limited Warranty

Customization

- ◆ OEM Custom Branding (paint and logo)
- ◆ Custom I/O, processors, mounting



Chassis Plans · 10123 Carroll Canyon Rd · San Diego · CA · 92131
Phone (858) 571-4330 · Fax (858) 571-6146
saleseng@chassisplans.com
www.chassis-plans.com
© 2009 Chassis Plans

Specifications

Panel

- ◆ **LCD size** 12.1", 4:3
- ◆ **Display Type** XGA
- ◆ **Resolution** 1024 x 768
- ◆ **Pixel pitch** 0.3075mm x 0.3075mm
- ◆ **Luminance** 450 cd/m²
- ◆ **Contrast ratio** 1000
- ◆ **Viewing angle** 80(U), 80(D), 80(L), 80(R)
- ◆ **Response time** 25 ms
- ◆ **Backlight** CCFL
- ◆ **Touch Type** 5 Wires resistive
- ◆ **Touch Interface** USB
- ◆ **Touch Light Transmission** 80
- ◆ **Display Chipset** Intel 945GSE GMCH Integrated GMA950 Graphics
- ◆ **Display Memory** Intel DVMT 3.0 Supports 224MB Frame Buffer Using System Memory

System

- ◆ **CPU** Onboard Intel® Atom™ N270 1.6 GHz (2.5W)
- ◆ **BIOS** Award 8 Mbit Flash BIOS
- ◆ **System Chipset** Intel® 945GSE / ICH7M
- ◆ **I/O Chip** ITE 8712F
- ◆ **System Memory** Onboard 1GB DDR2 and One 200-pin DDR2 SODIMM supports up to 2GB DDR2 400/533 (1GB per bank)
- ◆ **Solid State Disk** One CF socket by IDE secondary slave channel supports Type I / II Compact Flash Card
- ◆ **Hard Driver Bay** One 2.5" SATA HDD or optional 44-pin enhanced IDE HDD
- ◆ **Watchdog Timer** Reset: 1 sec. ~255 min. and 1 sec. or 1 min./step
- ◆ **H/W Status Monitor** Monitoring system temperature, voltage, and cooling fan status. Auto throttling control when CPU overheats
- ◆ **Expansion** 1 x Mini PCI



Rear I/O

- ◆ **Serial Port** 1 x RS-232
- ◆ **Ethernet** 2 x RJ-45
- ◆ **USB** 1 x USB 2.0

Audio

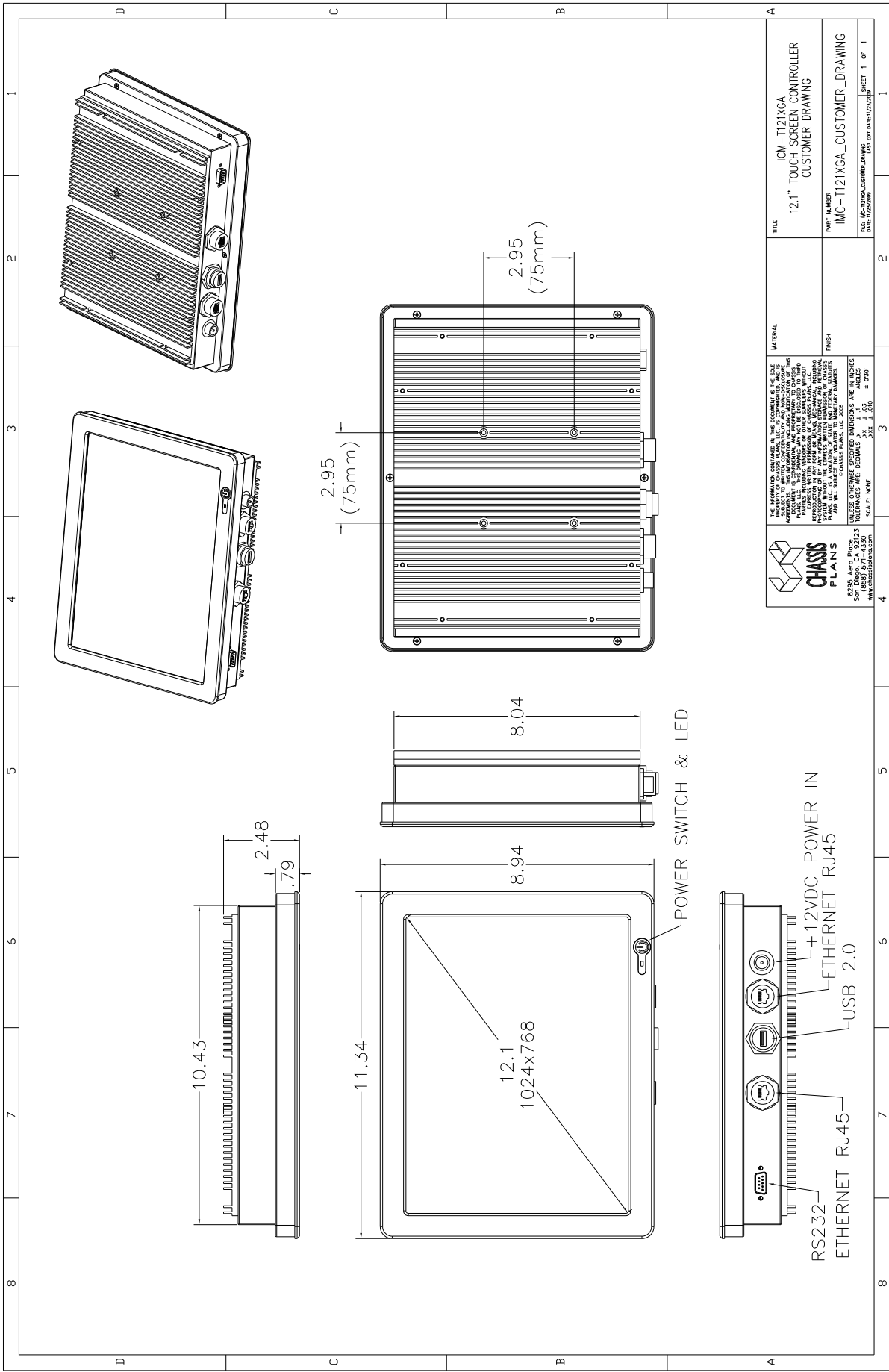
- ◆ **AC97 Codec** Realtek ALC 655 supports 5.1CH Audio
- ◆ **Audio Interface** Connector: Line out

Ethernet

- ◆ **LAN Chip** Dual Realtek RTL8111C Gigabit LAN
- ◆ **Ethernet** 10/100/1000 Base-T Fast Ethernet compatible

Mechanical and Environmental

- ◆ **Color** Front Silver & Rear panel Black
- ◆ **Mounting** Wall/Stand/VESA 75x75mm
- ◆ **Power Input** 100~250 Vdc / 47~63 Hz w/ included remote P/S
- ◆ **System Power** +12 Vdc / 5 A (60W)
- ◆ **Power Type** AT / ATX
- ◆ **Operating Temp.** 32~104°F (0~40°C)
- ◆ **Storage Temp.** ~140°F (-10~60°C)
- ◆ **Operating Humidity** 5%~90% relative humidity, non-condensing
- ◆ **Dimensions** 11.3" (W) x 8.9" (H) x 2.5" (D)
- ◆ **Weight** 7.3 Lbs



CHASSIS PLANS
8205 Aero Place
San Diego, CA 92123
www.chassisplans.com

THE INFORMATION CONTAINED IN THIS DOCUMENT IS THE SOLE PROPERTY OF CHASSIS PLANS. IT IS TO BE USED ONLY FOR THE PROJECT AND FOR THE SYSTEMS AND EQUIPMENT SPECIFICALLY IDENTIFIED IN THIS DOCUMENT. CHASSIS PLANS SHALL NOT BE HELD RESPONSIBLE FOR ANY DAMAGE TO PROPERTY OR PERSONS ARISING FROM THE USE OF THIS DOCUMENT. CHASSIS PLANS SHALL NOT BE HELD RESPONSIBLE FOR ANY DAMAGE TO PROPERTY OR PERSONS ARISING FROM THE USE OF THIS DOCUMENT. CHASSIS PLANS SHALL NOT BE HELD RESPONSIBLE FOR ANY DAMAGE TO PROPERTY OR PERSONS ARISING FROM THE USE OF THIS DOCUMENT.

TITLE	ICM-1121XGA 12.1" TOUCH SCREEN CONTROLLER CUSTOMER DRAWING
PART NUMBER	IMC-1121XGA_CUSTOMER_DRAWING
FILE NO.	IC-1121XGA_CUSTOM_DRAWING
DATE	10/2/2008
SCALE	1 OF 1