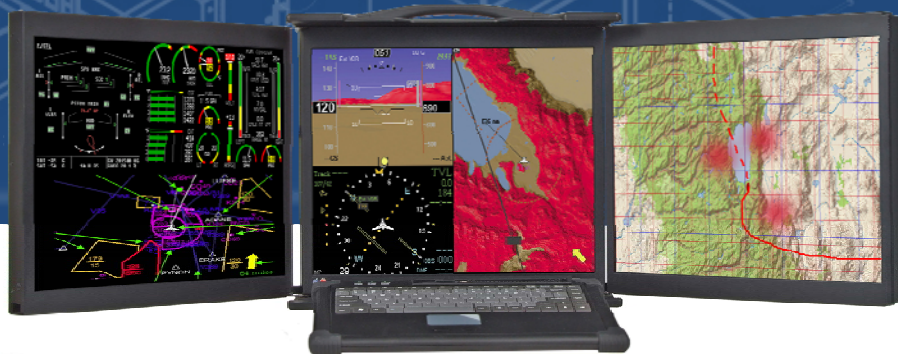


# MP3X17

Portable Computer

## RUGGED ENTERPRISE CLASS

SYSTEMS ENGINEERED TO PERFORM™



The MP3X17 Rugged Enterprise class portable computer is designed to meet the needs of Mission Critical Applications, providing configurations that are truly Fit-for-Use in a variety of operating environments and with a wide range of options to serve the most demanding requirements.

### Features

- ◆ Three 17-inch SXGA 1280x1024 LCD display
- ◆ Anti-glare hard coat to protect LCDs
- ◆ Internal 3-in-1 video splitter w/ DVI input
- ◆ Rugged aluminum alloy construction
- ◆ Rubber corner bumpers to protect against shock
- ◆ Fits ATX motherboard
- ◆ 7 Plug-in card slots
- ◆ Three hot swap SATA drive carriers
- ◆ One slim double layer DVD-RW
- ◆ Two high-flow external 120mm cooling fans
- ◆ Two internal 60mm cooling fans
- ◆ Detachable 87-key keyboard w/ touch pad
- ◆ Various power options including AC, DC, redundant
- ◆ Integrated systems available

### Support

- ◆ Superior Pre- and Post-sales Technical Support
- ◆ All Products Carry a One Year Limited Warranty

### Customization

- ◆ OEM Custom Branding (paint and logo)
- ◆ Alternative Processors, Drives and Power Supplies



The Original Industrial Computer Source®



Chassis Plans · 8295 Aero Place · San Diego · CA · 92123  
Phone (858) 571-4330 · Fax (858) 571-6146  
saleseng@chassisplans.com  
www.chassisplans.com  
© 2007 Chassis Plans

The MP3X17 Rugged Enterprise Series portable computing platform provides a rugged, versatile architecture for Military/Defense, Industrial, Medical, Security and Telecommunication applications. The MP3X17 portable computer system is unique in offering three 17" 1280x1024 resolution LCD displays in a portable computer. Effective viewing area is 3840x1024. The MP3X17 offers systems with the flexibility needed for a wide variety of uses, while using standard, off-the-shelf technologies to create solutions that are both cost-effective, State-of-the-Art in their performance and offering long product availability.

The displays can be run from a single video card or multiple cards as the mission software dictates. The LCD displays offer 300nit brightness, 800:1 contrast and 5ms response. The LCD's are provided



with an anti-glare hard coat for display enhancement and protection. A touch screen can be optionally fitted to any or all of the screens. Optional enhancement filters can be provided for improved viewing.

Constructed with heavy duty aluminum alloy, the MP3X17 is a robust system providing tough, go-anywhere functionality for demanding applications. The three LCD's fold forward over the front and the included keyboard attaches to the outside front for a single-piece unit to transport. A padded, wheeled transit case is provided that can survive airline handling.

The system provides mounting for a standard ATX (9.6x12-inch) motherboard. Seven plug-in card slots are provided. The I/O boards are all externally accessible for easy access to their connectors.

Three hot-swap SATA drive bays are included on the right side. Depending on the motherboard or disk controller, these can be configured in a RAID. A slot-fed DVDRW is provided on the right side. No floppy drive is included though the easy accessibility to the motherboard USB ports allows the simple use of an external drive. A slim double layer DVD-RW slot fed drive is also located on the right side.

Power is provided by a PS/2 supply with options for AC, DC and redundant inputs.



## Features

### Dimensions

14.3x15.5x11.5-inches  
(H x W x D)

### Construction

Aluminum alloy external chassis w/ rubber corners. Aluminum alloy inner frame.

### Weight

49.6lbs (typical system)

### LCD Displays

3x 17-inch SXGA 1280x1024 w/ 300-nit brightness, 800:1 contrast, 5ms response, 3840x1024 effective total resolution, anti-glare hard coat

### Drives

3x Hot swap SATA drive carriers for 3-1/2" drives  
Slim dual layer DVD-RW slot fed

### Motherboard

ATX form factor (9.6x12-inches)

### Power Supply

PS/2 w/ AC, DC, redundant options

### Cooling Fans

Two 120mm external fans  
Two 60mm internal fans

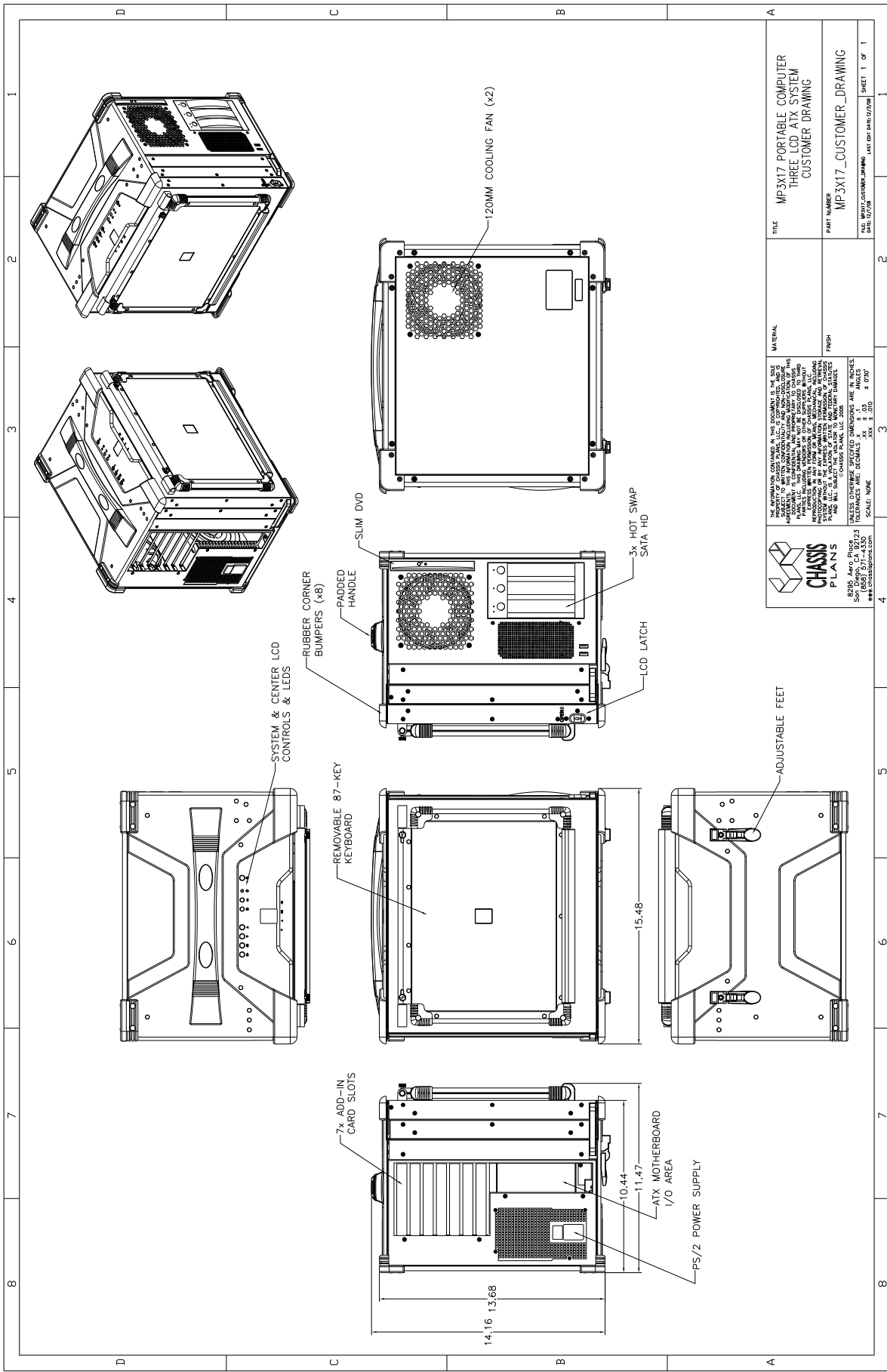
### Keyboard

87-key compact form w/ integrated touch pad

### Environmental

Operating Temp—0 to 50°C  
Relative Humidity—5-95% NC  
Shock—15G  
Vibration—1.25G@10-100Hz  
Compliance—CE, FCC Class B, CCC, UL





THE INFORMATION CONTAINED HEREIN IS THE PROPERTY OF CHASSIS PLANS, INC. © COPYRIGHT 1998. ALL RIGHTS RESERVED. THIS INFORMATION IS UNCLASSIFIED UNLESS INDICATED OTHERWISE. THIS INFORMATION IS NOT TO BE REPRODUCED OR TRANSMITTED IN ANY FORM OR BY ANY MEANS, ELECTRONIC OR MECHANICAL, INCLUDING PHOTOCOPYING, RECORDING, OR BY ANY INFORMATION STORAGE AND RETRIEVAL SYSTEM, WITHOUT THE EXPRESS WRITTEN PERMISSION OF CHASSIS PLANS, INC. ANY UNAUTHORIZED REPRODUCTION OR TRANSMISSION IS STRICTLY PROHIBITED AND WILL SUBJECT THE USER TO MULTIPLE DAMAGES.

UNLESS OTHERWISE SPECIFIED DIMENSIONS ARE IN INCHES.  
TOLERANCES ARE: DECIMALS .XX ± .01, ANGLES .001 ± .01.

SCALE: NONE .XX ± .01, .XX ± .01, .XX ± .01

TITLE	MP3X17 PORTABLE COMPUTER THREE LCD ATX SYSTEM CUSTOMER DRAWING
PART NUMBER	MP3X17_CUSTOMER_DRAWING
FILE	MP3X17_CUSTOMER_DRAWING
DATE	02/08
LAST EDIT DATE	02/08
SHEET	1 OF 1

