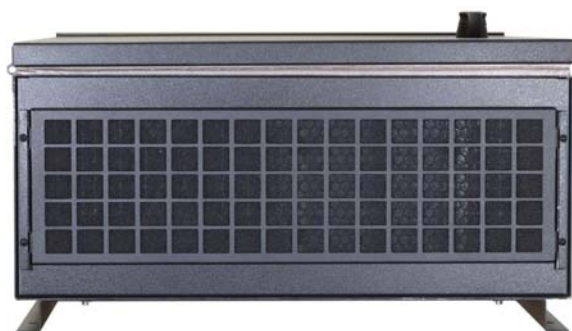


CHASSIS PLANS

W5-VGA8



Advantages

- Wall mount / bulkhead mount
- Door mounted 8" VGA LCD w/ touch screen
- Two internal 3.5" hard drives
- One internal 5.25" drive tray
- Included slim CD/Floppy adapter bracket
- Four high flow 90 mm hot swap cooling fans
- EATX Motherboard 12 x 13 inch
- Universal card hold down system
- Locking door and I/O cover

Support

- Superior pre-sales and post-sales technical support
- All products carry a two year warranty

Customization

- Integrated Solutions Offered
- Various power options including redundant
- Various front door LCD options
- Custom paint and logo available



The Original Industrial Computer Source®

Chassis Plans · 8295 Aero Place · San Diego · CA · 92123
 Phone (858) 571-4330 · Fax (858) 571-6146
 saleseng@chassisplans.com
 www.chassisplans.com
 © 2006 Chassis Plans

W5CHASSIS

The W5-VGA8 Series Wallmount chassis represents the next generation in industrial computing enclosures providing high performance in a low cost rugged enclosure. Feature rich, the W5 Series is a solid, robust design which will meet the most rigorous and demanding requirements. This is a ground-up design optimized for bulkhead and wall mounting. The W5 Series are not reworked rackmount designs.

The W5-VGA8 is perfect for a wide variety of applications where an office style enclosure does not provide appropriate protection and a 19" rack is not available. The W5-VGA8 can be hung exposed on a wall in a factory, in a closet such as a security system, mounted in a Hoffman enclosure on a drilling rig, and so forth. When the door is closed, it does not look like a computer which has high appeal for theft and vandalism mitigation.

The enclosure is constructed of 18 gauge steel, clear zinc plated for corrosion protection and completely painted for an attractive appearance.

The W5-VGA8 is equipped with an 8" TFT LCD with built-in touch screen. The screen resolution is 640x480 in native mode and it will support scaled resolutions up to 1024x768. Display brightness with the touch screen overlay is 280 cd/m² with a contrast of 200:1. The display supports VGA input, two composite and one s-video inputs. Input source can be selected via a front panel push button. Multiple video inputs allow you to monitor your process via camera inputs in addition to the computer interface.

A lockable door protects the installed components from prying hands. The door is sealed with fabric covered EMI gasket for both EMI and environmental sealing. The high quality locking compression latch sets the EMI gasket when the door is closed. Accessible behind the door is the power and reset switches as well as the power-on and drive activity LED's.

There is more than ample drive storage with the provided two internal 3-1/2" hard drive locations, and one front accessible 5-1/4" inch drive bay. Included in the 5-1/4" space is a slim floppy / slim CD/DVD adapter bracket.

The top I/O cavity is protected by a removable cover which is locked in place when the door is closed. Conduit knockouts are provided on both sides of the chassis. Thus, attached cables are protected from access by unauthorized persons. With the door closed and locked, the W5 becomes tamperproof.

The bottom exterior of the chassis provides a large air filter mounted in an easily removed bracket for ease of cleaning. Access to the inside is not required for filter removal. Cooling is provided by 4 hotswap 90mm 49CFM fans. Several fan options are available for higher flow or quieter operation including adaptive temperature controlled fans.

The W5-VGA8 Chassis provides for mounting an EATX motherboard. An innovative card hold-down mechanism assures cards stay seated in high vibration environments such as shipping and when mounted on operating machinery.

Power supply options include standard PS/2 form factor, redundant hot swap and 12/24/48VDC input supplies. The system provides outstanding cooling so virtually any power requirement such as dual XEON can be accommodated in any environment.

Many options are available for the W5-VGA8 chassis. The W5-VGA8 is ideally designed for MOTS (Modified Off The Shelf) requirements. Chassis Plans specializes in custom and semi-custom designs optimized for customer requirements.

Dimensions

16.95" (wide) x 21.94" (high) x 8.64" (deep)
Weight 37.4 lbs.

Drive Capacity

Two internal 3-1/2" hard drive brackets
One internal 5-1/4" drive tray (6.3" depth limit, other options available).
The 5-14" drive tray is standard with an adapter for a slip floppy and slim CD/DVD drive

Front Panel Controls

Power switch - momentary with 2 position .100 header for board connection
Reset switch - momentary with 2 position .100 header for board connection
Power LED - green with 3 position .100 header for board connection
Drive Activity - red with 2 position .100 header for board connection
Switch and LED connectors are labeled on the connector end
The controls and LED's are mounted behind the lockable door

LCD Details

Sharp LQ080V3DG01 panel technology
Screen Size: 8" diagonal
Aspect Ratio: 4:3
Dot Resolution: 640 x 480 VGA
Max Supported Resolution: 1024 x 768
Brightness: 280 cd/m2 (with touchscreen)
Contrast: 200:1
Viewing Angle: 65/65/45/60 degrees (r/l/u/d)
Horizontal Frequency: 60-85Hz
Vertical Frequency: 31.4-68.7Khz
On Screen Display Control—OSD: Multi-language
Video Source: Via front panel push button
Video Inputs:
 aRGB: High Density DB15
 Composite Video: Two RCA
 S-Video: Mini-Din
Note: All video inputs available inside Top Wiring Cavity area

Touch Screen

Type: Resistive Overlay with scratch resistant hard coating
Output: USB (available inside Top Wiring Cavity area)
Drivers: Windows XP, 98, NT. Contact factory for Linux driver support.

Top I/O Wiring Cavity Details

7 Plug-in card slots
Standard ATX I/O shield
Provision for ATX PS/2 or Redundant power supply
One 1/2" conduit knockout provided on each side of chassis
Video inputs and Touch Screen USB connectors
Cavity vertical height is 2.5" for I/O connectors and cables

Cooling

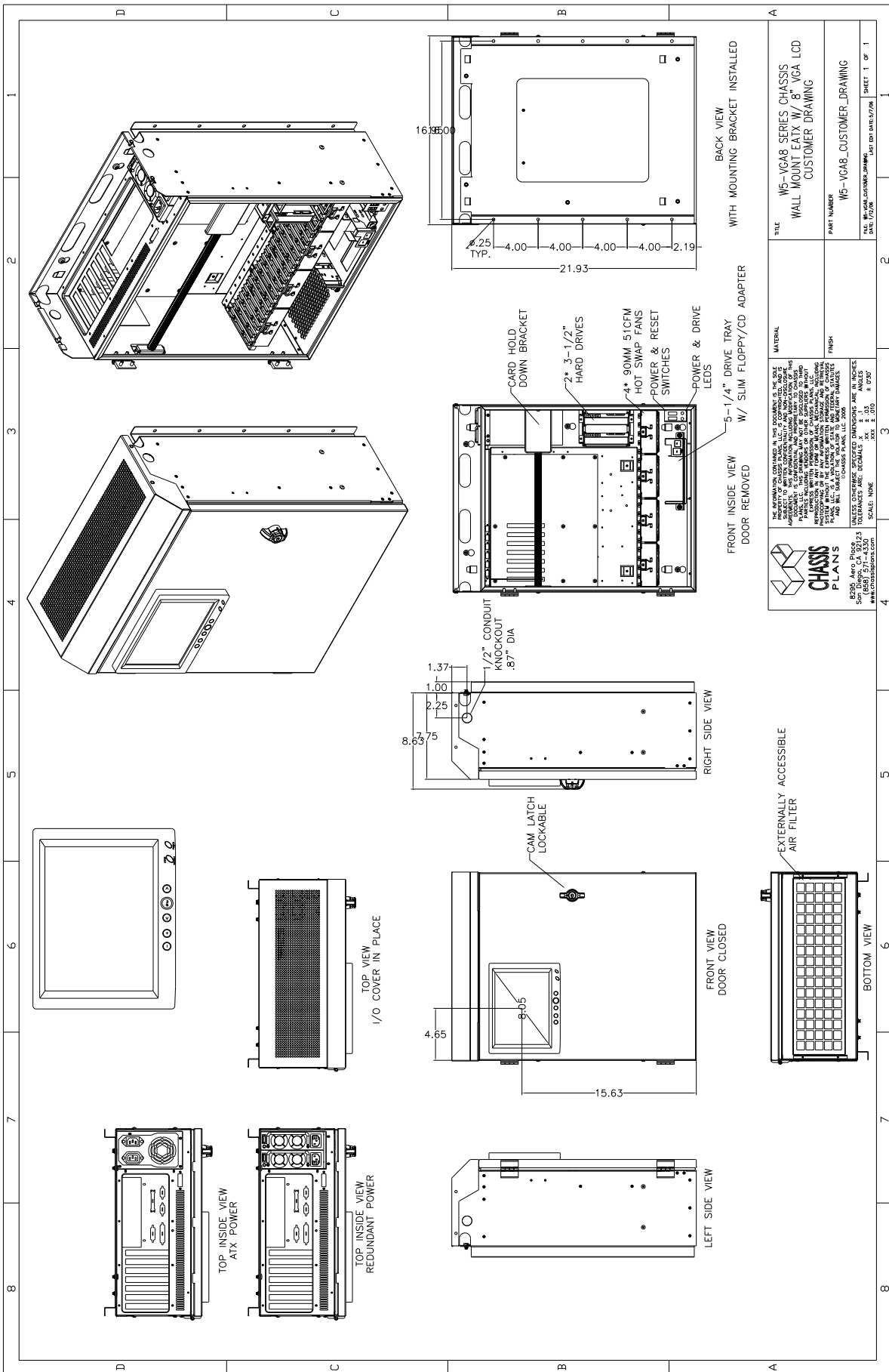
Four 90mm 49CFM fans
Fans are mounted in hot swap brackets w/ blind power connectors
Positive chassis pressure
30PPI filter installed on bottom exterior of chassis
Fan Options: thermister regulated fan speed, 3-wire tach signal, higher or lower flow rate

Power Supply

PS/2 Style supply
AC Input - Zippy HG2, HP2, PSM, PSL, AX2, SP2, LP2, MP2, SPE
Redundant AC Input - Zippy MRT, MRP, MRW, MRG,
DC Input - Zippy DB2 (24VDC), DD2 (48VDC), MB2 (24VDC), MD2 (48VDC)
Power supply not included

Motherboard Mounting

Standard 12 x 13 inch EATX motherboard
Motherboard adapter plate accommodates any motherboard



<p>PROPERTY OF CHASSIS PLANS, INC. - 2 COMPANY. THIS IS A PRELIMINARY DRAWING. THIS DRAWING IS UNLESS INDICATED OTHERWISE, IT IS NOT TO BE USED FOR CONSTRUCTION. CHASSIS PLANS, INC. IS NOT RESPONSIBLE FOR ANY DAMAGE TO PROPERTY OR PERSONS ARISING FROM THE USE OF THIS DRAWING. CHASSIS PLANS, INC. IS NOT RESPONSIBLE FOR ANY DAMAGE TO PROPERTY OR PERSONS ARISING FROM THE USE OF THIS DRAWING. CHASSIS PLANS, INC. IS NOT RESPONSIBLE FOR ANY DAMAGE TO PROPERTY OR PERSONS ARISING FROM THE USE OF THIS DRAWING.</p>	
TITLE	W5-VCA8 SERIES CHASSIS WALL MOUNT FATX W/ 8" VGA LCD CUSTOMER DRAWING
PART NUMBER	W5-VCA8_CUSTOM_DRAWING
DATE	1/2/09
LAST MOD DATE	1/2/09
SHEET	1 OF 1

