

# CHASSIS PLANS

## W5000-XGA15



### Advantages

- Wall mount / bulkhead mount
- Door mounted 15" XGA LCD
- LCD Resolution 1024 x 768
- Built-in 8-wire resistive Touch Screen
- Two internal 3.5" hard drives
- One internal 5.25" drive tray
- Included slim CD/Floppy adapter bracket
- Four high flow 90 mm hot swap cooling fans
- Up to 14-slot passive backplane
- Universal card hold down system
- Locking door and I/O cover

### Support

- Superior pre-sales and post-sales technical support
- All products carry a two year warranty

### Customization

- Integrated solutions offered
- Various power options including redundant
- Various front door LCD options
- Custom paint and logo available



The Original Industrial Computer Source®

Chassis Plans · 8295 Aero Place · San Diego · CA · 92123  
 Phone (858) 571-4330 · Fax (858) 571-6146  
 saleseng@chassisplans.com  
 www.chassisplans.com  
 © 2007 Chassis Plans

## W5000-XGA15 CHASSIS

The W5000-XGA15 Series Wallmount chassis represents the next generation in industrial computing enclosures providing high performance in a low cost rugged enclosure. Feature rich, the W5 Series is a solid, robust design which will meet the most rigorous and demanding requirements. This is a ground-up design optimized for bulkhead and wall mounting. The W5 Series are not re-worked rackmount designs.

The W5000-XGA15 is perfect for a wide variety of applications where an office style enclosure does not provide appropriate protection and a 19" rack is not available. The W5000-XGA15 can be hung exposed on a wall in a factory, in a closet such as a security system, mounted in a Hoffman enclosure on a drilling rig, and so forth. When the door is closed, it does not look like a computer which has high appeal for theft and vandalism mitigation.

The enclosure is constructed of 18 gauge steel, clear zinc plated for corrosion protection and completely painted for an attractive appearance.

The W5000-XGA15 is equipped with a 15" TFT LCD with built-in 8-wire resistive touch screen. The screen resolution is 1024 x 768 in native mode. Display brightness is 250 cd/m<sup>2</sup> with a contrast of 400:1. The display supports analog XGA input.

A lockable door protects the installed components from prying hands. The door is sealed with fabric covered EMI gasket for both EMI and environmental sealing. The high quality locking compression latch sets the EMI gasket when the door is closed. Accessible behind the door is the power and reset switches as well as the power-on and drive activity LED's and LCD controls.

There is more than ample drive storage with the provided two internal 3-1/2" hard drive locations, and one front accessible 5-1/4" inch drive bay. Included in the 5-1/4" space is a slim floppy / slim CD/DVD adapter bracket.

The top I/O cavity is protected by a removable cover which is locked in place when the door is closed. Conduit knockouts are provided on both sides of the chassis. Thus, attached cables are protected from access by unauthorized persons. With the door closed and locked, the W5 becomes tamperproof.

The bottom exterior of the chassis provides a large air filter mounted in an easily removed bracket for ease of cleaning. Access to the inside is not required for filter removal. Cooling is provided by 4 hotswap 90mm 49CFM fans. Several fan options are available for higher flow or quieter operation including adaptive temperature controlled fans.

The W5000-XGA15 Chassis provides for mounting a 14-slot backplane. An innovative card hold-down mechanism assures cards stay seated in high vibration environments such as shipping and when mounted on operating machinery.

Power supply options include standard PS/2 form factor, redundant hot swap and 12/24/48VDC input supplies. The system provides outstanding cooling so virtually any power requirement such as dual XEON can be accommodated in any environment.

Many options are available for the W5000-XGA15 chassis. The W5000-XGA15 is ideally designed for MOTS (Modified Off The Shelf) requirements. Chassis Plans specializes in custom and semi-custom designs optimized for customer requirements.



## Dimensions

16.95" (wide) x 21.94" (high) x 8.64" (deep)  
Weight 37.4 lbs.

## Drive Capacity

Two internal 3-1/2" hard drive brackets  
One internal 5-1/4" drive tray (6.3" depth limit, other options available).  
The 5-14" drive tray is standard with an adapter for a slip floppy and slim CD/DVD drive

## Front Panel Controls

Power switch  
Reset switch  
Power LED - Green  
Drive Activity - Amber  
Switch and LED connectors are labeled on the connector end  
The controls and LED's are mounted behind the lockable door

## LCD Details

NEC AccuSync LCD52V panel technology  
Screen Size: 15" diagonal  
Aspect Ratio: 4:3  
Dot Resolution: 1024 x 768 XGA  
Max Supported Resolution: 1024 x 768  
Color Support: 16.7 Million Colors (24-bit)  
Response Time: 16mS  
Brightness: 250 cd/m2 (without touchscreen)  
Contrast: 400:1  
Viewing Angle: 140 degrees horizontal, 110 degrees vertical  
Horizontal Frequency: 31.5-60KHz  
Vertical Frequency: 56-75Hz  
On Screen Display Control—OSD: Multi-language  
Video Inputs: aRGB on a High Density DB15  
Note: The video input is available inside Top Wiring Cavity area

## Touch Screen

Type: 8-Wire Resistive Overlay with scratch resistant hard coating  
Output: Serial w/ USB Optional (available inside Top Wiring Cavity area)  
Linearity: <=1.5%  
Resolution: 1024 x 1024  
Reliability: >100 Million touches  
Drivers: Windows XP, 98, NT. Contact factory for Linux driver support.

## **Top I/O Wiring Cavity Details**

14 Plug-in card slots  
Provision for ATX PS/2 or Redundant power supply  
Two DB9 knockouts and one AT Keyboard knockout  
One 1/2" conduit knockout provided on each side of chassis  
Video inputs and Touch Screen connectors  
Cavity vertical height is 2.5" for I/O connectors and cables

## **Cooling**

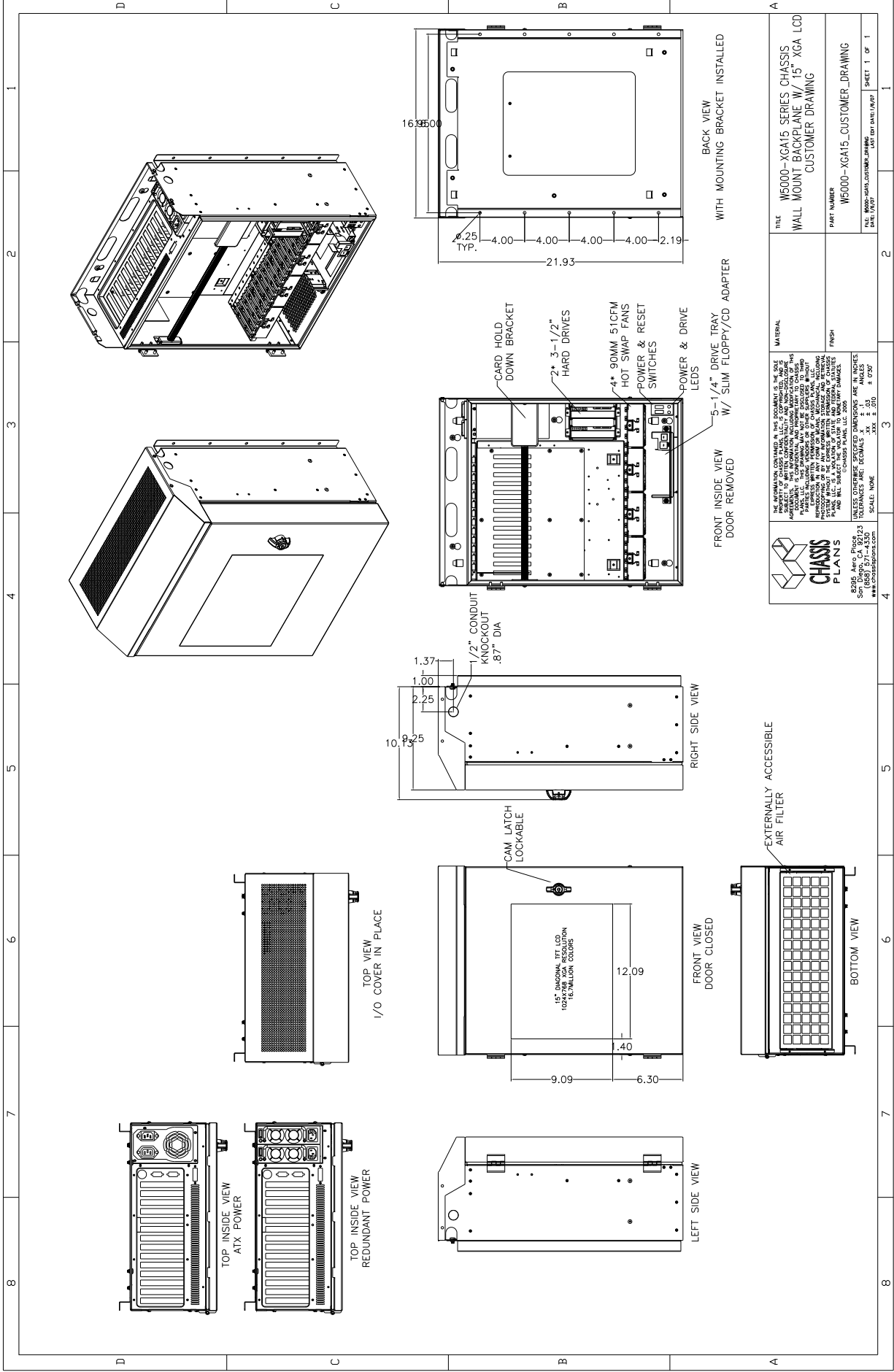
Four 90mm 49CFM fans  
Fans are mounted in hot swap brackets w/ blind power connectors  
Positive chassis pressure  
30PPI filter installed on bottom exterior of chassis  
Fan Options: thermister regulated fan speed, 3-wire tach signal, higher or lower flow rate

## **Power Supply**

PS/2 Style supply  
AC Input - Zippy HG2, HP2, PSM, PSL, AX2, SP2, LP2, MP2, SPE  
Redundant AC Input - Zippy MRT, MRP, MRW, MRG,  
DC Input - Zippy DB2 (24VDC), DD2 (48VDC), MB2 (24VDC), MD2 (48VDC)  
Power supply not included

## **Passive Backplane Mounting**

14-Slot ISA/PCI backplane accommodated  
Standard adapter plate accommodates most backplanes  
Custom adapter plates are available for other backplanes



<p>8295 Aero Plaza San Diego, CA 92123 www.chassis-plans.com</p>	<p>THE INFORMATION CONTAINED IN THIS DOCUMENT IS THE PROPERTY OF CHASSIS PLANS, LLC. IT IS CONFIDENTIAL AND NOT BE LOANED, REPRODUCED, COPIED, REPRODUCED, OR APPLIED IN ANY MANNER WITHOUT THE WRITTEN PERMISSION OF CHASSIS PLANS, LLC. THIS DRAWING IS NOT TO BE USED FOR ANY OTHER PURPOSE WITHOUT THE WRITTEN PERMISSION OF CHASSIS PLANS, LLC. AND NOT SUBJECT TO ANY TRADE TO ANY OTHER PART.</p>	<p>MATERIAL</p>	<p>TITLE</p>
	<p>UNLESS OTHERWISE SPECIFIED, DIMENSIONS ARE IN INCHES TOLERANCES ARE DECIMALS ± .010 XXX ± .010 SCALE: NONE</p>	<p>FINISH</p>	<p>W5000-XCA15 SERIES CHASSIS WALL MOUNT BACKPLANE W/ 15" XGA LCD CUSTOMER DRAWING</p>
<p>DATE: 10/20/00</p>	<p>FILE: W5000-XCA15_CUSTOMER.DWG</p>	<p>PART NUMBER</p>	<p>SHEET 1 OF 1</p>
<p>W5000-XCA15_CUSTOMER_DRAWING</p>	<p>W5000-XCA15_CUSTOMER_DRAWING</p>	<p>W5000-XCA15_CUSTOMER_DRAWING</p>	<p>W5000-XCA15_CUSTOMER_DRAWING</p>

