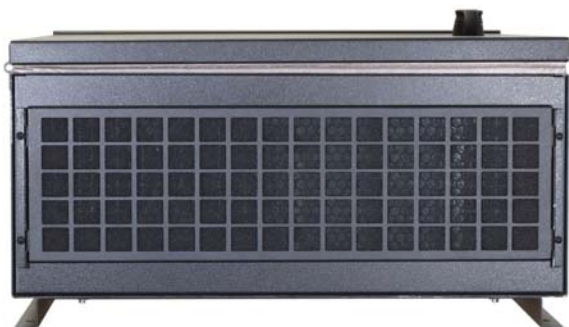


CHASSIS PLANS

W5CHASSIS



Advantages

- Wall mount / bulkhead mount
- Two internal 3.5" hard drives
- One internal 5.25" drive tray
- Included slim CD/Floppy adapter bracket
- Four high flow 90 mm hot swap cooling fans
- EATX Motherboard 12 x 13 inch
- Universal card hold down system
- Locking door and I/O cover

Support

- Superior pre-sales and post-sales technical support
- All products carry a two year warranty

Customization

- Various power options including redundant
- Various front door LCD options
- Custom paint and logo available



The Original Industrial Computer Source™

Chassis Plans · 8295 Aero Place · San Diego · CA · 92123
 Phone (858) 571-4330 · Fax (858) 571-6146
 saleseng@chassisplans.com
 www.chassisplans.com
 © 2005 Chassis Plans

W5CHASSIS

The W5 Series Wallmount chassis represents the next generation in industrial computing enclosures providing high performance in a low cost rugged enclosure. Feature rich, the W5 Series is a solid, robust design which will meet the most rigorous and demanding requirements. This is a ground-up design optimized for bulkhead and wall mounting. The W5 is not a reworked rackmount design.

The W5 is perfect for a wide variety of applications where an office style enclosure does not provide appropriate protection and a 19" rack is not available. The W5 can be hung exposed on a wall in a factory, in a closet such as a security system, mounted in a Hoffman enclosure on a drilling rig, and so forth. When the door is closed, it does not look like a computer which has high appeal for theft and vandalism mitigation.

The enclosure is constructed of 18 gauge steel, clear zinc plated for corrosion protection and completely painted for an attractive appearance.

There is more than ample drive storage with the provided two internal 3-1/2" hard drive locations, and one front accessible 5-1/4" inch drive bay. Included in the 5-1/4" space is a slim floppy / slim CD/DVD adapter bracket.

A lockable door protects the installed components from prying hands. The door is sealed with fabric covered EMI gasket for both EMI and environmental sealing. The high quality locking compression latch sets the EMI gasket when the door is closed. Accessible behind the door is the power and reset switches as well as the power-on and drive activity LED's.

The top I/O cavity is protected by a removable cover which is locked in place when the door is closed. Conduit knockouts are provided on both sides of the chassis. Thus, attached cables are protected from access by unauthorized persons. With the door closed and locked, the W5 becomes tamperproof.

The bottom exterior of the chassis provides a large air filter mounted in an easily removed bracket for ease of cleaning. Access to the inside is not required for filter removal. Cooling is provided by 4 hotswap 90mm 49CFM fans. Several fan options are available for higher flow or quieter operation including adaptive temperature controlled fans.

The W5 Chassis provides for mounting an EATX motherboard. An innovative card hold-down mechanism assures cards stay seated in high vibration environments such as shipping and when mounted on operating machinery.

Power supply options include standard PS/2 form factor, redundant hot swap and 12/24/48VDC input supplies. The system provides outstanding cooling so virtually any power requirement such as dual XEON can be accommodated in any environment.

Many options are available for the W5 chassis including door mounted LCD/Control panels and door mount LCD displays to 17" 1024x1280 in vertical orientation. The W5 is ideally designed for MOTS (Modified Off The Shelf) requirements. Chassis Plans specializes in custom and semi-custom designs optimized for customer requirements.



Dimensions

16.95" (wide) x 21.94" (high) x 8.64" (deep)
Weight 37.4 lbs.

Drive Capacity

Two internal 3-1/2" hard drive brackets
One internal 5-1/4" drive tray.

The 5-14" drive tray is standard with an adapter for a slip floppy and slim CD/DVD drive

Front Panel Controls

Power switch - momentary with 2 position .100 header for board connection
Reset switch - momentary with 2 position .100 header for board connection
Power LED - green with 3 position .100 header for board connection
Drive Activity - red with 2 position .100 header for board connection
Switch and LED connectors are labeled on the connector end
The controls and LED's are mounted behind the lockable door

Top I/O Wiring Cavity Details

7 Plug-in card slots
One 1/2" conduit knockout provided on each side of chassis
Cavity vertical height is 2.5" for I/O connectors and cables

Cooling

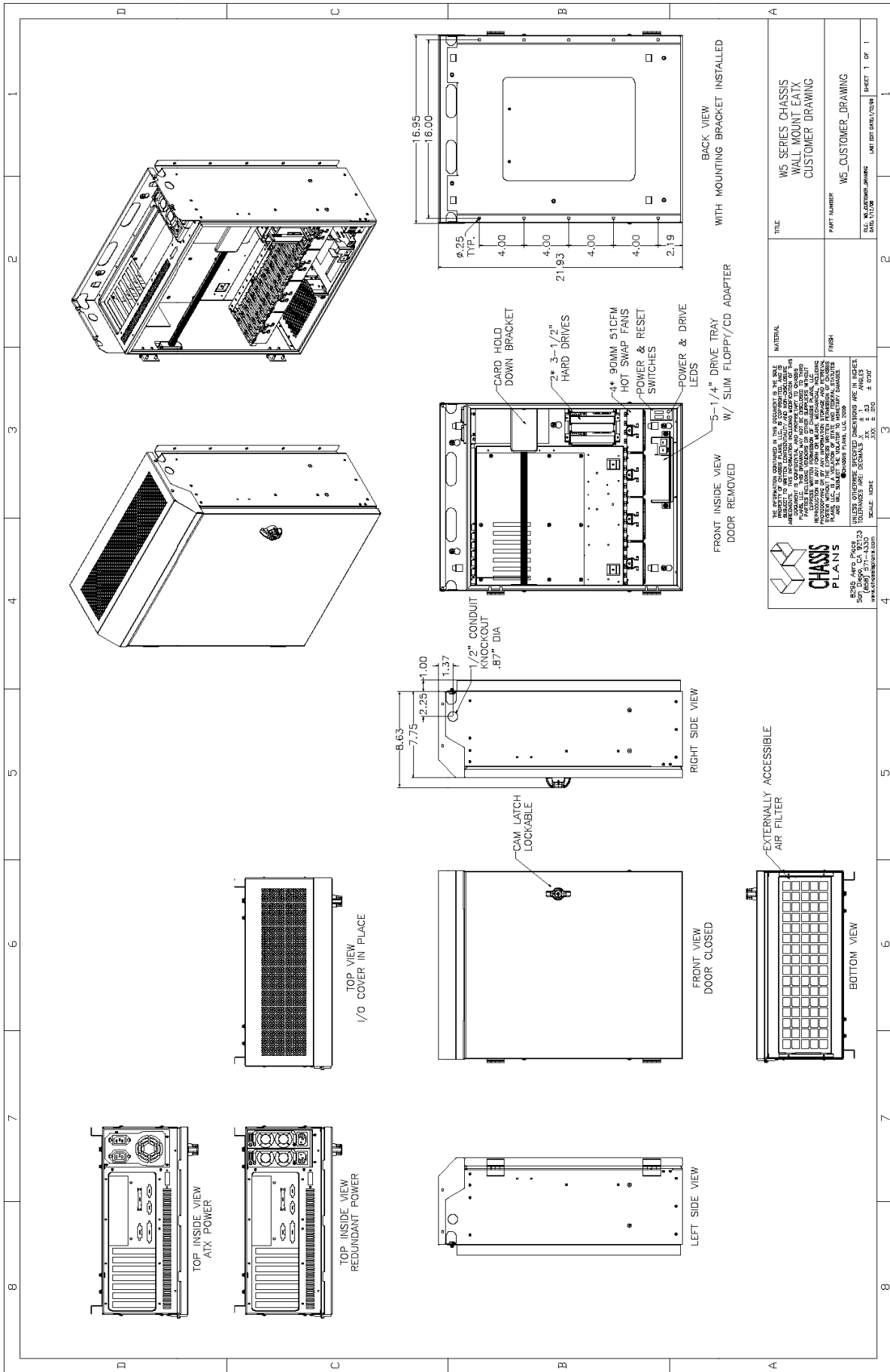
Four 90mm 49CFM fans
Fans are mounted in hot swap brackets w/ blind power connectors
Positive chassis pressure
30PPI filter installed on bottom exterior of chassis
Fan Options: thermister regulated fan speed, 3-wire tach signal, higher or lower flow rate

Power Supply

PS/2 Style supply
AC Input - Zippy HG2, HP2, PSM, PSL, AX2, SP2, LP2, MP2, SPE
Redundant AC Input - Zippy MRT, MRP, MRW, MRG,
DC Input - Zippy DB2 (24VDC), DD2 (48VDC), MB2 (24VDC), MD2 (48VDC)
Power supply not included

Motherboard Mounting

Standard 12 x 13 inch EATX motherboard
Motherboard adapter plate accommodates any motherboard



<p>CHASSIS PLANS 8050 Aero, Post 30 5050 Aero, Post 30 www.chassisplans.com</p>		<p>UNLESS OTHERWISE SPECIFIED DIMENSIONS ARE IN INCHES TOLERANCES ARE: DIMENALS ± .03 ANGLES ± .005 SCALE: NONE</p>	
<p>NOTE: INFORMATION CONTAINED IN THIS DOCUMENT IS THE PROPERTY OF CHASSIS PLANS, LLC. IT IS TO BE USED ONLY FOR THE PROJECT AND SYSTEM FOR WHICH IT WAS SPECIFICALLY DESIGNED. THE INFORMATION CONTAINED HEREIN IS NOT TO BE REPRODUCED OR TRANSMITTED IN ANY FORM OR BY ANY MEANS, ELECTRONIC OR MECHANICAL, INCLUDING PHOTOCOPYING, RECORDING, OR BY ANY INFORMATION STORAGE AND RETRIEVAL SYSTEM, WITHOUT THE EXPRESS WRITTEN PERMISSION OF CHASSIS PLANS, LLC. CHASSIS PLANS, LLC SHALL BE LIABLE TO THE USER FOR DAMAGES.</p>		<p>MATERIAL</p>	
<p>FINISH</p>		<p>TITLE W5 SERIES CHASSIS WALL MOUNT EATX CUSTOMER DRAWING</p>	
<p>PART NUMBER WS_CUSTOMER_DRAWING</p>		<p>DATE: 11/17/08</p>	
<p>FILE: WS_CUSTOMER_DRAWING</p>		<p>JAN 08 09:50:12 (PST)</p>	
<p>SHEET: 1 OF 1</p>		<p>SHEET: 1 OF 1</p>	

